

Datasheet for ABIN2783318  
**anti-MDH2 antibody (C-Term)**

3 Images

3 Publications

[Go to Product page](#)

## Overview

Quantity:	100 µL
Target:	MDH2
Binding Specificity:	C-Term
Reactivity:	Human, Mouse, Rat, Rabbit, Cow, Guinea Pig, Zebrafish (Danio rerio), Dog, Horse
Host:	Rabbit
Clonality:	Polyclonal
Conjugate:	This MDH2 antibody is un-conjugated
Application:	Western Blotting (WB)

## Product Details

Immunogen:	The immunogen is a synthetic peptide directed towards the C terminal region of human MDH2
Sequence:	TYFSTPLLLG KKGIEKNLGI GKVSSFEEKM ISDAIPELKA SIKKGEDFVK
Predicted Reactivity:	Cow: 93%, Dog: 93%, Guinea Pig: 100%, Horse: 93%, Human: 100%, Mouse: 100%, Rabbit: 100%, Rat: 100%, Zebrafish: 92%
Characteristics:	This is a rabbit polyclonal antibody against MDH2. It was validated on Western Blot using a cell lysate as a positive control.
Purification:	Protein A purified

## Target Details

Target:	MDH2
---------	------

## Target Details

Alternative Name:	MDH2 ( <a href="#">MDH2 Products</a> )
Background:	<p>Malate dehydrogenase catalyzes the reversible oxidation of malate to oxaloacetate, utilizing the NAD/NADH cofactor system in the citric acid cycle. MDH2 is localized to the mitochondria and may play pivotal roles in the malate-aspartate shuttle that operates in the metabolic coordination between cytosol and mitochondria. Malate dehydrogenase catalyzes the reversible oxidation of malate to oxaloacetate, utilizing the NAD/NADH cofactor system in the citric acid cycle. The protein encoded by this gene is localized to the mitochondria and may play pivotal roles in the malate-aspartate shuttle that operates in the metabolic coordination between cytosol and mitochondria. Publication Note: This RefSeq record includes a subset of the publications that are available for this gene. Please see the Entrez Gene record to access additional publications.</p> <p>Alias Symbols: M-MDH, MDH, MGC:3559, MOR1</p> <p>Protein Interaction Partner: FUS, HUWE1, GRSF1, UBC, MDM2, PARK2, UBD, METTL21B, VCAM1, ITGA4, FN1, ATF2, LDHAL6A, MRPS28, IDH1, CLNS1A, SERPINH1, ATP5B, ATP5A1, CRYAB, COPS5, CDK2, PSMA3, PCNA, HDAC5, Mapk13, PSMD4, PC, WARS, NDUFS1, MDH2, GOT2, FH, CS,</p> <p>Protein Size: 338</p>
Molecular Weight:	33 kDa
Gene ID:	4191
NCBI Accession:	<a href="#">NM_005918</a> , <a href="#">NP_005909</a>
UniProt:	<a href="#">P40926</a>

## Application Details

Application Notes:	Optimal working dilutions should be determined experimentally by the investigator.
Comment:	Antigen size: 338 AA
Restrictions:	For Research Use only

## Handling

Format:	Liquid
Concentration:	Lot specific
Buffer:	Liquid. Purified antibody supplied in 1x PBS buffer with 0.09 % (w/v) sodium azide and 2 % sucrose.

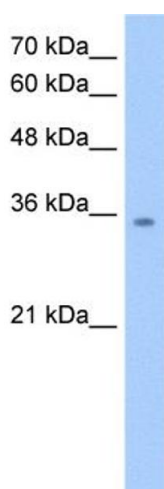
## Handling

Preservative:	Sodium azide
Precaution of Use:	This product contains Sodium azide: a POISONOUS AND HAZARDOUS SUBSTANCE which should be handled by trained staff only.
Handling Advice:	Avoid repeated freeze-thaw cycles.
Storage:	-20 °C
Storage Comment:	For short term use, store at 2-8°C up to 1 week. For long term storage, store at -20°C in small aliquots to prevent freeze-thaw cycles.

## Publications

Product cited in:	Suzuki, Fujisawa, Ando, Niino, Ohsawa, Shimokata, Ohta: "Alcohol dehydrogenase 2 variant is associated with cerebral infarction and lacunae." in: <b>Neurology</b> , Vol. 63, Issue 9, pp. 1711-3, (2004) ( <a href="#">PubMed</a> ).
-------------------	---

## Images

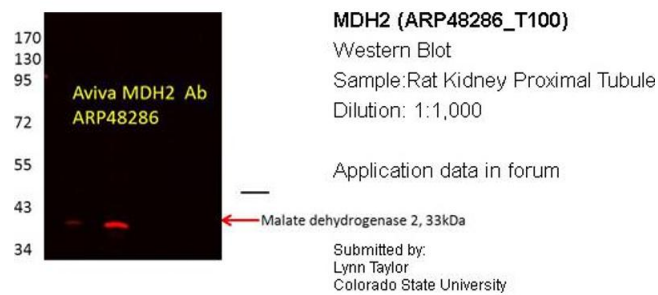


### Western Blotting

**Image 1.** WB Suggested Anti-MDH2 Antibody Titration:  
2.5ug/ml Positive Control: HepG2 cell lysate

Western Blotting

Image 2.



Western Blotting

Image 3. MDH2 antibody - C-terminal region validated by WB using Proximal kidney tubules purified from cortex at 1:1000.

