

Datasheet for ABIN2783325
anti-RABL4 antibody (C-Term)[Go to Product page](#)

2 Images

1 Publication

Overview

| | |
|----------------------|---|
| Quantity: | 100 µL |
| Target: | RABL4 (IFT27) |
| Binding Specificity: | C-Term |
| Reactivity: | Human, Mouse, Cow, Rat, Sheep, Dog, Pig |
| Host: | Rabbit |
| Clonality: | Polyclonal |
| Conjugate: | This RABL4 antibody is un-conjugated |
| Application: | Immunohistochemistry (IHC), Western Blotting (WB) |

Product Details

| | |
|-----------------------|---|
| Immunogen: | The immunogen is a synthetic peptide directed towards the C terminal region of human RABL4 |
| Sequence: | RAWALGQGLE CFETSVKEME NFEAPFHCLA KQFHQLYREK VEVFRALA |
| Predicted Reactivity: | Cow: 86%, Dog: 93%, Human: 100%, Mouse: 79%, Pig: 85%, Rat: 79%, Sheep: 86% |
| Characteristics: | This is a rabbit polyclonal antibody against RABL4. It was validated on Western Blot using a cell lysate as a positive control. |
| Purification: | Affinity Purified |

Target Details

| | |
|-------------------|--|
| Target: | RABL4 (IFT27) |
| Alternative Name: | RABL4 (IFT27 Products) |

Target Details

| | |
|-------------------|--|
| Background: | <p>RABL4 belongs to the small GTPase superfamily, Ras family. RABL4 possesses GTPase activity By similarity. This gene encodes a putative GTP-binding protein similar to RAY/RAB1C. The protein is ras-related, but the function is unknown.</p> <p>Alias Symbols: RAYL, RABL4</p> <p>Protein Interaction Partner: HSPB11, GOLGA2, PRDX5,</p> <p>Protein Size: 185</p> |
| Molecular Weight: | 20 kDa |
| Gene ID: | 11020 |
| NCBI Accession: | NM_006860 , NP_006851 |
| Pathways: | Hedgehog Signaling |

Application Details

| | |
|--------------------|--|
| Application Notes: | Optimal working dilutions should be determined experimentally by the investigator. |
| Comment: | Antigen size: 185 AA |
| Restrictions: | For Research Use only |

Handling

| | |
|--------------------|---|
| Format: | Liquid |
| Concentration: | Lot specific |
| Buffer: | Liquid. Purified antibody supplied in 1x PBS buffer with 0.09 % (w/v) sodium azide and 2 % sucrose. |
| Preservative: | Sodium azide |
| Precaution of Use: | This product contains Sodium azide: a POISONOUS AND HAZARDOUS SUBSTANCE which should be handled by trained staff only. |
| Handling Advice: | Avoid repeated freeze-thaw cycles. |
| Storage: | -20 °C |
| Storage Comment: | For short term use, store at 2-8°C up to 1 week. For long term storage, store at -20°C in small aliquots to prevent freeze-thaw cycles. |

Publications

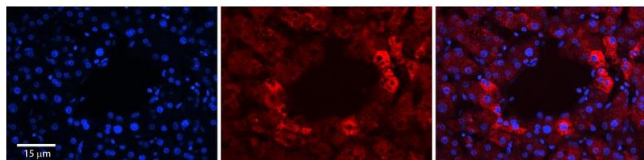
Product cited in: Ewing, Chu, Elisma, Li, Taylor, Climie, McBroom-Cerajewski, Robinson, OConnor, Li, Taylor, Dharsee, Ho, Heilbut, Moore, Zhang, Ornatsky, Bukhman, Ethier, Sheng, Vasilescu, Abu-Farha, Lambert, Duewel et al.: "Large-scale mapping of human protein-protein interactions by mass spectrometry. ..." in: **Molecular systems biology**, Vol. 3, pp. 89, (2007) ([PubMed](#)).

Images



Western Blotting

Image 1. WB Suggested Anti-RABL4 Antibody Titration: 0.2-1 ug/ml Positive Control: 721_B cell lysate IFT27 is supported by BioGPS gene expression data to be expressed in 721_B



Immunohistochemistry

Image 2. Rabbit Anti-RABL4 Antibody Formalin Fixed Paraffin Embedded Tissue: Human Adult Liver Observed Staining: Cytoplasm in hepatocytes surrounding the portal vein only, signal is strong but tissue abundance is low Primary Antibody Concentration: 1:100 Secondary Antibody: Donkey anti-Rabbit-Cy3 Secondary Antibody Concentration: 1:200 Magnification: 20X Exposure Time: 0.5 – 2.0 sec Protocol located in Reviews and Data.