

Datasheet for ABIN2783330
anti-GRHPR antibody (N-Term)[Go to Product page](#)

2 Images

1 Publication

Overview

Quantity:	100 µL
Target:	GRHPR
Binding Specificity:	N-Term
Reactivity:	Human, Rat, Dog, Pig, Horse, Rabbit
Host:	Rabbit
Clonality:	Polyclonal
Conjugate:	This GRHPR antibody is un-conjugated
Application:	Western Blotting (WB), Immunohistochemistry (IHC)

Product Details

Immunogen:	The immunogen is a synthetic peptide directed towards the N terminal region of human GRHPR
Sequence:	EPIPAKELER GVAGAHGLLC LLSDHVDKRI LDAAGANLKV ISTMSVGIDH
Predicted Reactivity:	Dog: 100%, Horse: 86%, Human: 100%, Pig: 79%, Rabbit: 93%, Rat: 91%
Characteristics:	This is a rabbit polyclonal antibody against GRHPR. It was validated on Western Blot using a cell lysate as a positive control.
Purification:	Affinity Purified

Target Details

Target:	GRHPR
Alternative Name:	GRHPR (GRHPR Products)

Target Details

Background:	<p>GRHPR is an enzyme with hydroxypyruvate reductase, glyoxylate reductase, and D-glycerate dehydrogenase enzymatic activities. The enzyme has widespread tissue expression and has a role in metabolism. Type II hyperoxaluria is caused by mutations in this gene. This gene encodes an enzyme with hydroxypyruvate reductase, glyoxylate reductase, and D-glycerate dehydrogenase enzymatic activities. The enzyme has widespread tissue expression and has a role in metabolism. Type II hyperoxaluria is caused by mutations in this gene. Publication Note: This RefSeq record includes a subset of the publications that are available for this gene. Please see the Entrez Gene record to access additional publications.</p> <p>Alias Symbols: GLXR, PH2, GLYD</p> <p>Protein Interaction Partner: GLS2, CDC7, UBC, PTH2R, FOS, LIG4, SUCLA2, PGM1, HSD17B4, CXADR, SLC25A5, ACOX1, LSM1,</p> <p>Protein Size: 328</p>
-------------	---

Molecular Weight:	36 kDa
-------------------	--------

Gene ID:	9380
----------	------

NCBI Accession:	NM_012203 , NP_036335
-----------------	---

UniProt:	Q9UBQ7
----------	------------------------

Application Details

Application Notes:	Optimal working dilutions should be determined experimentally by the investigator.
--------------------	--

Comment:	Antigen size: 328 AA
----------	----------------------

Restrictions:	For Research Use only
---------------	-----------------------

Handling

Format:	Liquid
---------	--------

Concentration:	Lot specific
----------------	--------------

Buffer:	Liquid. Purified antibody supplied in 1x PBS buffer with 0.09 % (w/v) sodium azide and 2 % sucrose.
---------	---

Preservative:	Sodium azide
---------------	--------------

Precaution of Use:	This product contains Sodium azide: a POISONOUS AND HAZARDOUS SUBSTANCE which should be handled by trained staff only.
--------------------	--

Handling Advice:	Avoid repeated freeze-thaw cycles.
------------------	------------------------------------

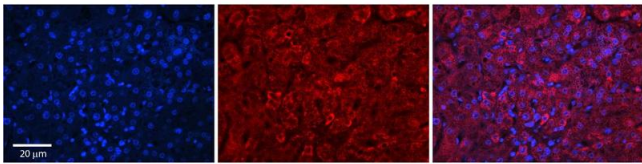
Handling

Storage:	-20 °C
Storage Comment:	For short term use, store at 2-8°C up to 1 week. For long term storage, store at -20°C in small aliquots to prevent freeze-thaw cycles.

Publications

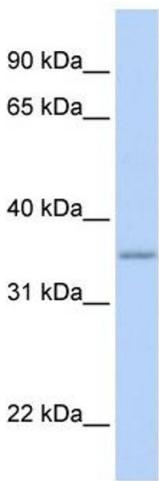
Product cited in:	Takayama, Nagata, Ozono, Nonomura, Cramer: "A novel mutation in the GRHPR gene in a Japanese patient with primary hyperoxaluria type 2." in: Nephrology, dialysis, transplantation : official publication of the European Dialysis and Transplant Association - European Renal Association , Vol. 22, Issue 8, pp. 2371-4, (2007) (PubMed).
-------------------	--

Images



Immunohistochemistry

Image 1. Rabbit Anti-GRHPR Antibody Catalog Number: ARP48317_P050 Formalin Fixed Paraffin Embedded Tissue: Human Adult Liver Observed Staining: Cytoplasm in hepatocytes, strong signal, wide tissue distribution Primary Antibody Concentration: 1:100 Secondary Antibody: Donkey anti-Rabbit-Cy3 Secondary Antibody Concentration: 1:200 Magnification: 20X Exposure Time: 0.5 – 2.0 sec Protocol located in Reviews and Data.



Western Blotting

Image 2. WB Suggested Anti-GRHPR Antibody Titration: 0.2-1 ug/ml ELISA Titer: 1:312500 Positive Control: Human Liver