

Datasheet for ABIN2783331
anti-RSU1 antibody (C-Term)[Go to Product page](#)

3 Images

Overview

Quantity:	100 µL
Target:	RSU1
Binding Specificity:	C-Term
Reactivity:	Human, Mouse, Rat, Cow, Dog, Guinea Pig, Horse, Rabbit, Sheep, Zebrafish (Danio rerio)
Host:	Rabbit
Clonality:	Polyclonal
Conjugate:	This RSU1 antibody is un-conjugated
Application:	Western Blotting (WB), Immunohistochemistry (IHC)

Product Details

Immunogen:	The immunogen is a synthetic peptide directed towards the C terminal region of human RSU1
Sequence:	PIADQFQLGV SHVFEYIRSE TYKLYGRHM QANPEPPKKK NDKSKKISRK
Predicted Reactivity:	Cow: 100%, Dog: 100%, Guinea Pig: 100%, Horse: 100%, Human: 100%, Mouse: 100%, Rabbit: 93%, Rat: 100%, Sheep: 93%, Zebrafish: 93%
Characteristics:	This is a rabbit polyclonal antibody against RSU1. It was validated on Western Blot and immunohistochemistry.
Purification:	Protein A purified

Target Details

Target:	RSU1
---------	------

Target Details

Alternative Name:	RSU1 (RSU1 Products)
Background:	<p>RSU1 is a protein that is involved in the Ras signal transduction pathway, growth inhibition, and nerve-growth factor induced differentiation processes, as determined in mouse and human cell line studies. In mouse, the protein was initially isolated based on its ability to inhibit v-Ras transformation. This gene encodes a protein that is involved in the Ras signal transduction pathway, growth inhibition, and nerve-growth factor induced differentiation processes, as determined in mouse and human cell line studies. In mouse, the encoded protein was initially isolated based on its ability to inhibit v-Ras transformation. Multiple alternatively spliced transcript variants for this gene have been reported, one of these variants was found only in glioma tumors.</p> <p>Alias Symbols: FLJ31034, RSP-1</p> <p>Protein Interaction Partner: UBC, LIMS1, SUGT1, SEC24D, PPAT, FAM114A1, PARVA, LRCH3, ILK, FN1, VCP, APP, LRRK1, ELAVL1, GSK3B, RAF1, HGS, ACP6,</p> <p>Protein Size: 277</p>
Molecular Weight:	31 kDa
Gene ID:	6251
NCBI Accession:	NM_012425 , NP_036557
UniProt:	Q15404

Application Details

Application Notes:	Optimal working dilutions should be determined experimentally by the investigator.
Comment:	Antigen size: 277 AA
Restrictions:	For Research Use only

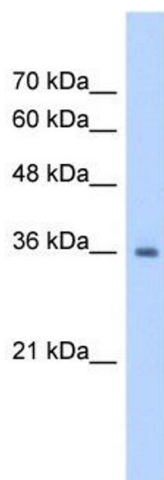
Handling

Format:	Liquid
Concentration:	Lot specific
Buffer:	Liquid. Purified antibody supplied in 1x PBS buffer with 0.09 % (w/v) sodium azide and 2 % sucrose.
Preservative:	Sodium azide
Precaution of Use:	This product contains Sodium azide: a POISONOUS AND HAZARDOUS SUBSTANCE which

Handling

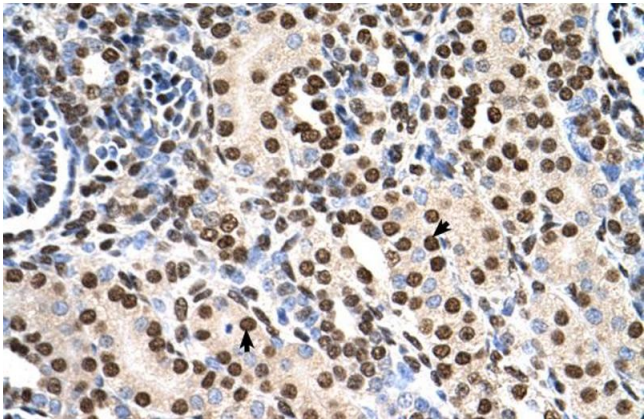
	should be handled by trained staff only.
Handling Advice:	Avoid repeated freeze-thaw cycles.
Storage:	-20 °C
Storage Comment:	For short term use, store at 2-8°C up to 1 week. For long term storage, store at -20°C in small aliquots to prevent freeze-thaw cycles.

Images



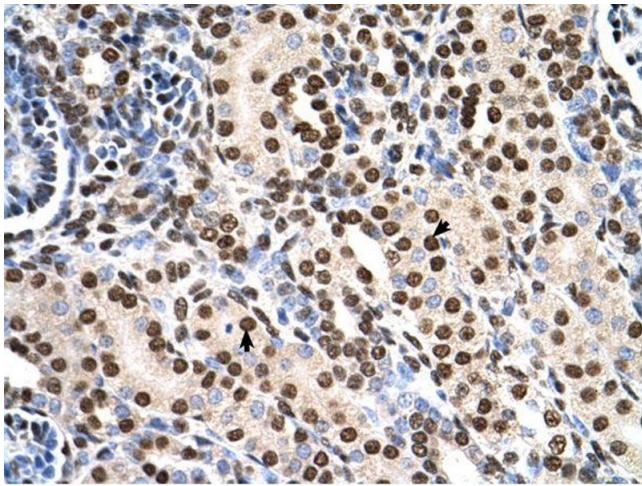
Western Blotting

Image 1. WB Suggested Anti-RSU1 Antibody Titration: 1.25ug/ml Positive Control: Jurkat cell lysate



Immunohistochemistry

Image 2. Human kidney



Immunohistochemistry

Image 3.