

Datasheet for ABIN2783347
anti-C1orf63 antibody (C-Term)[Go to Product page](#)[1 Image](#)[1 Publication](#)

Overview

Quantity:	100 µL
Target:	C1orf63
Binding Specificity:	C-Term
Reactivity:	Human
Host:	Rabbit
Clonality:	Polyclonal
Conjugate:	This C1orf63 antibody is un-conjugated
Application:	Western Blotting (WB)

Product Details

Immunogen:	The immunogen is a synthetic peptide directed towards the C terminal region of human C1orf63
Sequence:	PTQQRSIAFS SNNVAKPIQ KSAKAATEEA SSRSPKIDQK KSPYGLWIPI
Predicted Reactivity:	Human: 100%
Characteristics:	This is a rabbit polyclonal antibody against C1orf63. It was validated on Western Blot using a cell lysate as a positive control.
Purification:	Affinity Purified

Target Details

Target:	C1orf63
---------	---------

Target Details

Alternative Name:	C1orf63 (C1orf63 Products)
Background:	<p>The exact function of C1orf63 remains unknown.</p> <p>Alias Symbols: DJ465N24.2.1, NPD014, RP3-465N24.4</p> <p>Protein Interaction Partner: CLK3, CLK2, PRMT5, SRPK2, SRPK1, APP,</p> <p>Protein Size: 290</p>
Molecular Weight:	33 kDa
Gene ID:	57035
NCBI Accession:	NM_020317 , NP_064713
UniProt:	Q9BUV0

Application Details

Application Notes:	Optimal working dilutions should be determined experimentally by the investigator.
Comment:	Antigen size: 290 AA
Restrictions:	For Research Use only

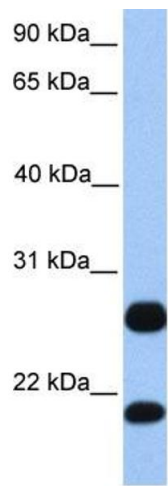
Handling

Format:	Liquid
Concentration:	Lot specific
Buffer:	Liquid. Purified antibody supplied in 1x PBS buffer with 0.09 % (w/v) sodium azide and 2 % sucrose.
Preservative:	Sodium azide
Precaution of Use:	This product contains Sodium azide: a POISONOUS AND HAZARDOUS SUBSTANCE which should be handled by trained staff only.
Handling Advice:	Avoid repeated freeze-thaw cycles.
Storage:	-20 °C
Storage Comment:	For short term use, store at 2-8°C up to 1 week. For long term storage, store at -20°C in small aliquots to prevent freeze-thaw cycles.

Publications

Product cited in: Hamada, Tashiro, Tada, Inazawa, Shirozu, Shibahara, Nakamura, Martina, Nakano, Honjo: "

Isolation and characterization of a novel secretory protein, stromal cell-derived factor-2 (SDF-2) using the signal sequence trap method." in: **Gene**, Vol. 176, Issue 1-2, pp. 211-4, (1997) ([PubMed](#)).



Western Blotting

Image 1. WB Suggested Anti-C1orf63 Antibody Titration: 0.2-1 ug/ml Positive Control: HepG2 cell lysate C1orf63 is supported by BioGPS gene expression data to be expressed in HepG2