



[Go to Product page](#)

Datasheet for ABIN2783348

## anti-LZTFL1 antibody (C-Term)

1 Image

1 Publication

### Overview

Quantity:	100 µL
Target:	LZTFL1
Binding Specificity:	C-Term
Reactivity:	Human, Mouse, Rat, Pig, Cow, Dog, Guinea Pig, Rabbit, Zebrafish (Danio rerio), Horse
Host:	Rabbit
Clonality:	Polyclonal
Conjugate:	This LZTFL1 antibody is un-conjugated
Application:	Western Blotting (WB)

### Product Details

Immunogen:	The immunogen is a synthetic peptide directed towards the C terminal region of human LZTFL1
Sequence:	VQEQLHMAEK ELEKKFQQT A YRNMKEILT KKNDQIKDLR KRLAQYEPED
Predicted Reactivity:	Cow: 100%, Dog: 86%, Guinea Pig: 79%, Horse: 93%, Human: 100%, Mouse: 100%, Pig: 100%, Rabbit: 93%, Rat: 100%, Zebrafish: 92%
Characteristics:	This is a rabbit polyclonal antibody against LZTFL1. It was validated on Western Blot using a cell lysate as a positive control.
Purification:	Protein A purified

### Target Details

Target:	LZTFL1
---------	--------

## Target Details

---

Alternative Name:	LZTFL1 ( <a href="#">LZTFL1 Products</a> )
Background:	The function remains unknown. Alias Symbols: FLJ36386 Protein Interaction Partner: WDYHV1, LZTFL1, SDCBP, UBC, SH3GLB2, RPUSD2, UBXN7, PES1, BLMH, FZD5, ELAVL1, Protein Size: 299
Molecular Weight:	34 kDa
Gene ID:	54585
NCBI Accession:	<a href="#">NM_020347</a> , <a href="#">NP_065080</a>
UniProt:	<a href="#">Q9NQ48</a>

## Application Details

---

Application Notes:	Optimal working dilutions should be determined experimentally by the investigator.
Comment:	Antigen size: 299 AA
Restrictions:	For Research Use only

## Handling

---

Format:	Liquid
Concentration:	Lot specific
Buffer:	Liquid. Purified antibody supplied in 1x PBS buffer with 0.09 % (w/v) sodium azide and 2 % sucrose.
Preservative:	Sodium azide
Precaution of Use:	This product contains Sodium azide: a POISONOUS AND HAZARDOUS SUBSTANCE which should be handled by trained staff only.
Handling Advice:	Avoid repeated freeze-thaw cycles.
Storage:	-20 °C
Storage Comment:	For short term use, store at 2-8°C up to 1 week. For long term storage, store at -20°C in small aliquots to prevent freeze-thaw cycles.

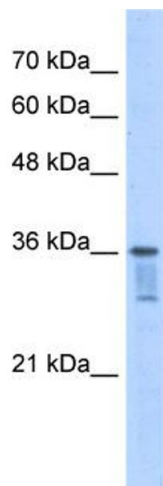
## Publications

---

Product cited in: Mehrle, Rosenfelder, Schupp, del Val, Arlt, Hahne, Bechtel, Simpson, Hofmann, Hide, Glatting, Huber, Pepperkok, Poustka, Wiemann: "The LIFEdb database in 2006." in: **Nucleic acids research**, Vol. 34, Issue Database issue, pp. D415-8, (2005) ([PubMed](#)).

## Images

---



### Western Blotting

**Image 1.** WB Suggested Anti-LZTFL1 Antibody Titration: 2.5ug/ml Positive Control: Jurkat cell lysate LZTFL1 is supported by BioGPS gene expression data to be expressed in Jurkat