



[Go to Product page](#)

Datasheet for ABIN2783354

anti-FAM113A antibody (N-Term)

1 Image

1 Publication

Overview

Quantity:	100 µL
Target:	FAM113A
Binding Specificity:	N-Term
Reactivity:	Human, Mouse, Rabbit, Guinea Pig, Horse, Rat, Dog, Zebrafish (Danio rerio)
Host:	Rabbit
Clonality:	Polyclonal
Conjugate:	This FAM113A antibody is un-conjugated
Application:	Western Blotting (WB)

Product Details

Immunogen:	The immunogen is a synthetic peptide directed towards the N terminal region of human FAM113A
Sequence:	VLLLQKDSLL TAAQLKAKGE LSFEQDQLVA GGQLGELHNG TQYREVRQFC
Predicted Reactivity:	Dog: 100%, Guinea Pig: 100%, Horse: 100%, Human: 100%, Mouse: 100%, Rabbit: 100%, Rat: 100%, Zebrafish: 77%
Characteristics:	This is a rabbit polyclonal antibody against FAM113A. It was validated on Western Blot using a cell lysate as a positive control.
Purification:	Affinity Purified

Target Details

Target:	FAM113A
---------	---------

Target Details

Alternative Name:	FAM113A (FAM113A Products)
Background:	The function remains unknown. Alias Symbols: C20orf81, DKFZp547L054, FLJ22376, bA12M19.1, FAM113A Protein Interaction Partner: NOTCH2NL, KRTAP10-3, KRTAP10-8, KRTAP10-7, PLSCR1, UBE2M, CDK2, Protein Size: 454
Molecular Weight:	52 kDa
Gene ID:	64773
NCBI Accession:	NM_022760 , NP_073597
UniProt:	Q9H1Q7

Application Details

Application Notes:	Optimal working dilutions should be determined experimentally by the investigator.
Comment:	Antigen size: 454 AA
Restrictions:	For Research Use only

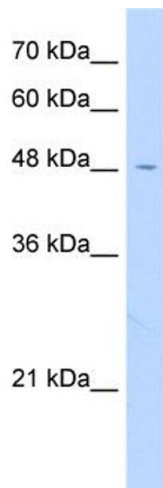
Handling

Format:	Liquid
Concentration:	Lot specific
Buffer:	Liquid. Purified antibody supplied in 1x PBS buffer with 0.09 % (w/v) sodium azide and 2 % sucrose.
Preservative:	Sodium azide
Precaution of Use:	This product contains Sodium azide: a POISONOUS AND HAZARDOUS SUBSTANCE which should be handled by trained staff only.
Handling Advice:	Avoid repeated freeze-thaw cycles.
Storage:	-20 °C
Storage Comment:	For short term use, store at 2-8°C up to 1 week. For long term storage, store at -20°C in small aliquots to prevent freeze-thaw cycles.

Publications

Product cited in: Hamada, Tashiro, Tada, Inazawa, Shirozu, Shibahara, Nakamura, Martina, Nakano, Honjo: " Isolation and characterization of a novel secretory protein, stromal cell-derived factor-2 (SDF-2) using the signal sequence trap method." in: **Gene**, Vol. 176, Issue 1-2, pp. 211-4, (1997) ([PubMed](#)).

Images



Western Blotting

Image 1. WB Suggested Anti-FAM113A Antibody Titration:
0.2-1 ug/ml Positive Control: HepG2 cell lysate