

Datasheet for ABIN2783356  
**anti-THOC6 antibody (Middle Region)**[Go to Product page](#)

1 Image

1 Publication

## Overview

Quantity:	100 µL
Target:	THOC6
Binding Specificity:	Middle Region
Reactivity:	Human, Mouse, Rat, Cow, Dog, Guinea Pig, Horse, Zebrafish (Danio rerio)
Host:	Rabbit
Clonality:	Polyclonal
Conjugate:	This THOC6 antibody is un-conjugated
Application:	Western Blotting (WB)

## Product Details

Immunogen:	The immunogen is a synthetic peptide directed towards the middle region of human THOC6
Sequence:	AGGDCQLHTM DLETGTFTRV LRGHTDYIHC LALRERSPEV LSGGEDGAVR
Predicted Reactivity:	Cow: 100%, Dog: 100%, Guinea Pig: 100%, Horse: 100%, Human: 100%, Mouse: 100%, Rat: 100%, Zebrafish: 79%
Characteristics:	This is a rabbit polyclonal antibody against THOC6. It was validated on Western Blot using a cell lysate as a positive control.
Purification:	Affinity Purified

## Target Details

Target:	THOC6
---------	-------

## Target Details

Alternative Name:	THOC6 ( <a href="#">THOC6 Products</a> )
Background:	<p>THOC6 belongs to the WD repeat THOC6 family. It contains 7 WD repeats. The function of the THOC6 protein remains unknown.</p> <p>Alias Symbols: MGC2655, WDR58, fSAP35</p> <p>Protein Interaction Partner: SUMO2, WWOX, RPA3, RPA2, RPA1, SUZ12, RNF2, rev, MMS19, ZNF326, TRIM55, THOC3, THOC7, THOC2, ZC3H15, ZCCHC8, SF3B6, SRRM2, SNRNP200, U2AF2, SRSF10, THOC1, IPO13, EFTUD2, RRP9, THOC5, VDAC2, UTRN, U2AF1, TPR, PRKDC, LAMP2, HNRNPA0, ALYREF, DDX39B, NCBP1, E</p> <p>Protein Size: 341</p>
Molecular Weight:	37 kDa
Gene ID:	79228
NCBI Accession:	<a href="#">NM_024339</a> , <a href="#">NP_077315</a>
UniProt:	<a href="#">Q86W42</a>

## Application Details

Application Notes:	Optimal working dilutions should be determined experimentally by the investigator.
Comment:	Antigen size: 341 AA
Restrictions:	For Research Use only

## Handling

Format:	Liquid
Concentration:	Lot specific
Buffer:	Liquid. Purified antibody supplied in 1x PBS buffer with 0.09 % (w/v) sodium azide and 2 % sucrose.
Preservative:	Sodium azide
Precaution of Use:	This product contains Sodium azide: a POISONOUS AND HAZARDOUS SUBSTANCE which should be handled by trained staff only.
Handling Advice:	Avoid repeated freeze-thaw cycles.
Storage:	-20 °C
Storage Comment:	For short term use, store at 2-8°C up to 1 week. For long term storage, store at -20°C in small

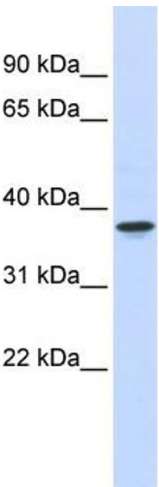
Handling

aliquots to prevent freeze-thaw cycles.

Publications

Product cited in: Lazrek, Goffard, Schanen, Karquel, Bocket, Lion, Devaux, Hedouin, Gosset, Hober: "Detection of hepatitis C virus antibodies and RNA among medicolegal autopsy cases in Northern France." in: **Diagnostic microbiology and infectious disease**, Vol. 55, Issue 1, pp. 55-8, (2006) ([PubMed](#)).

Images



**Western Blotting**

**Image 1.** WB Suggested Anti-THOC6 Antibody Titration: 0.2-1 ug/ml ELISA Titer: 1:62500 Positive Control: Human Pancreas