



[Go to Product page](#)

Datasheet for ABIN2783360
anti-NUDT16L1 antibody (C-Term)

1 Image

Overview

Quantity:	100 µL
Target:	NUDT16L1
Binding Specificity:	C-Term
Reactivity:	Human, Rat, Mouse, Rabbit, Cow, Dog, Guinea Pig
Host:	Rabbit
Clonality:	Polyclonal
Conjugate:	This NUDT16L1 antibody is un-conjugated
Application:	Western Blotting (WB)

Product Details

Immunogen:	The immunogen is a synthetic peptide directed towards the C terminal region of human NUDT16L1
Sequence:	GLVRVPLYTQ KDRVGGFPNF LSNAFVSTAK CQLLFALKVL NMMPEEKLVE
Predicted Reactivity:	Cow: 100%, Dog: 100%, Guinea Pig: 100%, Human: 100%, Mouse: 100%, Rabbit: 100%, Rat: 100%
Characteristics:	This is a rabbit polyclonal antibody against NUDT16L1. It was validated on Western Blot.
Purification:	Protein A purified

Target Details

Target:	NUDT16L1
Alternative Name:	NUDT16L1 (NUDT16L1 Products)

Target Details

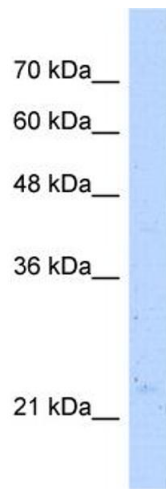
Background:	NUDT16L1 is a probable adapter protein, which may link syndecan-4 (SDC4) and paxilin (TGFB1I1 and PXN) receptors. Alias Symbols: MGC11275, SDOS Protein Interaction Partner: PNMA1, TRAF2, RNF2, BMI1, HECW2, UBC, APP, CUL3, CUL4B, NEDD8, CAND1, COPS5, CUL1, Nedd4, NEDD4L, Protein Size: 211
Molecular Weight:	23 kDa
Gene ID:	84309
NCBI Accession:	NM_032349 , NP_115725
UniProt:	Q9BRJ7

Application Details

Application Notes:	Optimal working dilutions should be determined experimentally by the investigator.
Comment:	Antigen size: 211 AA
Restrictions:	For Research Use only

Handling

Format:	Liquid
Concentration:	Lot specific
Buffer:	Liquid. Purified antibody supplied in 1x PBS buffer with 0.09 % (w/v) sodium azide and 2 % sucrose.
Preservative:	Sodium azide
Precaution of Use:	This product contains Sodium azide: a POISONOUS AND HAZARDOUS SUBSTANCE which should be handled by trained staff only.
Handling Advice:	Avoid repeated freeze-thaw cycles.
Storage:	-20 °C
Storage Comment:	For short term use, store at 2-8°C up to 1 week. For long term storage, store at -20°C in small aliquots to prevent freeze-thaw cycles.



Western Blotting

Image 1. WB Suggested Anti-NUDT16L1 Antibody

Titration: 5.0ug/ml ELISA Titer: 1:312500 Positive Control:

HepG2 cell lysate