

Datasheet for ABIN2783370  
**anti-Cofilin 2 antibody (C-Term)**



[Go to Product page](#)

1 Image

## Overview

Quantity:	100 µL
Target:	Cofilin 2 (CFL2)
Binding Specificity:	C-Term
Reactivity:	Human, Mouse, Rat, Cow, Dog, Horse, Guinea Pig, Zebrafish (Danio rerio)
Host:	Rabbit
Clonality:	Polyclonal
Conjugate:	This Cofilin 2 antibody is un-conjugated
Application:	Western Blotting (WB)

## Product Details

Immunogen:	The immunogen is a synthetic peptide directed towards the C-terminal region of Cfl2
Sequence:	FWAPESAPLK SKMIYASSKD AIKKKFTGIK HEWQVNLDD IKDRSTLGEK
Predicted Reactivity:	Cow: 100%, Dog: 100%, Guinea Pig: 100%, Horse: 100%, Human: 100%, Mouse: 100%, Rat: 100%, Zebrafish: 86%
Characteristics:	This is a rabbit polyclonal antibody against Cfl2. It was validated on Western Blot.
Purification:	Affinity Purified

## Target Details

Target:	Cofilin 2 (CFL2)
Alternative Name:	Cfl2 ( <a href="#">CFL2 Products</a> )

## Target Details

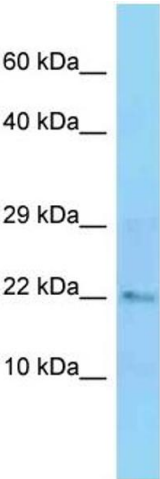
Background:	<p>Cfl2 controls reversibly actin polymerization and depolymerization in a pH -sensitive manner. It has the ability to bind G- and F-actin in a 1:1 ratio of cofilin to actin. It is the major component of intranuclear and cytoplasmic actin rods.</p> <p>Alias Symbols: -</p> <p>Protein Interaction Partner: CFTR,</p> <p>Protein Size: 166</p>
Molecular Weight:	19 kDa
Gene ID:	12632
NCBI Accession:	<a href="#">NM_007688</a> , <a href="#">NP_031714</a>
UniProt:	<a href="#">P45591</a>
Pathways:	<a href="#">Caspase Cascade in Apoptosis</a>

## Application Details

Application Notes:	Optimal working dilutions should be determined experimentally by the investigator.
Comment:	Antigen size: 166 AA
Restrictions:	For Research Use only

## Handling

Format:	Liquid
Concentration:	Lot specific
Buffer:	Liquid. Purified antibody supplied in 1x PBS buffer with 0.09 % (w/v) sodium azide and 2 % sucrose.
Preservative:	Sodium azide
Precaution of Use:	This product contains Sodium azide: a POISONOUS AND HAZARDOUS SUBSTANCE which should be handled by trained staff only.
Handling Advice:	Avoid repeated freeze-thaw cycles.
Storage:	-20 °C
Storage Comment:	For short term use, store at 2-8°C up to 1 week. For long term storage, store at -20°C in small aliquots to prevent freeze-thaw cycles.



Western Blotting

**Image 1.** WB Suggested Anti-Cfl2 Antibody Titration: 1.0 ug/ml Positive Control: Mouse Liver