



[Go to Product page](#)

Datasheet for ABIN2783373

## anti-ADSSL1 antibody (Middle Region)

### 1 Image

#### Overview

Quantity:	100 µL
Target:	ADSSL1
Binding Specificity:	Middle Region
Reactivity:	Human, Mouse, Rat, Zebrafish (Danio rerio), Cow, Dog, Rabbit, Guinea Pig, Horse
Host:	Rabbit
Clonality:	Polyclonal
Conjugate:	This ADSSL1 antibody is un-conjugated
Application:	Western Blotting (WB)

#### Product Details

Immunogen:	The immunogen is a synthetic peptide directed towards the middle region of human ADSSL1
Sequence:	VDGLQEVQRQ AQEGKNIGTT KKGIGPTYSS KAARTGLRIC DLLSDFDEFS
Predicted Reactivity:	Cow: 93%, Dog: 93%, Guinea Pig: 93%, Horse: 93%, Human: 100%, Mouse: 100%, Rabbit: 100%, Rat: 100%, Zebrafish: 100%
Characteristics:	This is a rabbit polyclonal antibody against ADSSL1. It was validated on Western Blot using a cell lysate as a positive control.
Purification:	Affinity Purified

#### Target Details

Target:	ADSSL1
---------	--------

## Target Details

---

Alternative Name:	ADSSL1 ( <a href="#">ADSSL1 Products</a> )
Background:	<p>ADSSL1 is a muscle isozyme of adenylosuccinate synthase (EC 6.3.4.4), which catalyzes the initial reaction in the conversion of inosine monophosphate (IMP) to adenosine monophosphate (AMP).</p> <p>Alias Symbols: FLJ38602</p> <p>Protein Interaction Partner: LYAR, AZIN1, ADSSL1,</p> <p>Protein Size: 457</p>
Molecular Weight:	50 kDa
Gene ID:	122622
NCBI Accession:	<a href="#">NM_152328</a> , <a href="#">NP_689541</a>
UniProt:	<a href="#">Q8N142</a>
Pathways:	<a href="#">Ribonucleoside Biosynthetic Process</a>

## Application Details

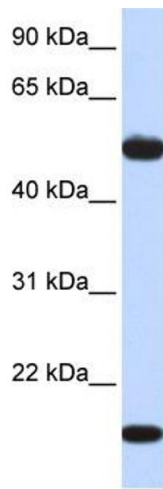
---

Application Notes:	Optimal working dilutions should be determined experimentally by the investigator.
Comment:	Antigen size: 457 AA
Restrictions:	For Research Use only

## Handling

---

Format:	Liquid
Concentration:	Lot specific
Buffer:	Liquid. Purified antibody supplied in 1x PBS buffer with 0.09 % (w/v) sodium azide and 2 % sucrose.
Preservative:	Sodium azide
Precaution of Use:	This product contains Sodium azide: a POISONOUS AND HAZARDOUS SUBSTANCE which should be handled by trained staff only.
Handling Advice:	Avoid repeated freeze-thaw cycles.
Storage:	-20 °C
Storage Comment:	For short term use, store at 2-8°C up to 1 week. For long term storage, store at -20°C in small aliquots to prevent freeze-thaw cycles.



### Western Blotting

**Image 1.** WB Suggested Anti-ADSSL1 Antibody Titration: 0.2-1 ug/ml ELISA Titer: 1:12500 Positive Control: Human Muscle