

Datasheet for ABIN2783382
anti-GALT antibody (C-Term)[Go to Product page](#)[1 Image](#)[1 Publication](#)

Overview

Quantity:	100 µL
Target:	GALT
Binding Specificity:	C-Term
Reactivity:	Human, Mouse, Rat, Rabbit, Cow, Dog, Guinea Pig, Horse
Host:	Rabbit
Clonality:	Polyclonal
Conjugate:	This GALT antibody is un-conjugated
Application:	Western Blotting (WB)

Product Details

Immunogen:	The immunogen is a synthetic peptide directed towards the C terminal region of human GALT
Sequence:	LLRSATVRKF MVGYEMLAQA QRDLTPEQAA ERLRALPEVH YHLGQKDRET
Predicted Reactivity:	Cow: 100%, Dog: 100%, Guinea Pig: 100%, Horse: 100%, Human: 100%, Mouse: 100%, Rabbit: 100%, Rat: 100%
Characteristics:	This is a rabbit polyclonal antibody against GALT. It was validated on Western Blot using a cell lysate as a positive control.
Purification:	Affinity Purified

Target Details

Target:	GALT
---------	------

Target Details

Alternative Name:	GALT (GALT Products)
Background:	<p>Galactose-1-phosphate uridyl transferase (GALT) catalyzes the second step of the Leloir pathway of galactose metabolism, namely the conversion of UDP-glucose + galactose-1-phosphate to glucose-1-phosphate + UDP-galactose. The absence of this enzyme results in classic galactosemia in humans and can be fatal in the newborn period if lactose is not removed from the diet. The pathophysiology of galactosemia has not been clearly defined.</p> <p>Galactose-1-phosphate uridyl transferase (GALT) catalyzes the second step of the Leloir pathway of galactose metabolism, namely the conversion of UDP-glucose + galactose-1-phosphate to glucose-1-phosphate + UDP-galactose. The absence of this enzyme results in classic galactosemia in humans and can be fatal in the newborn period if lactose is not removed from the diet. The pathophysiology of galactosemia has not been clearly defined.</p> <p>Publication Note: This RefSeq record includes a subset of the publications that are available for this gene. Please see the Entrez Gene record to access additional publications.</p> <p>Alias Symbols: -</p> <p>Protein Interaction Partner: TNK2, UBC, TMED9, TRIP13,</p> <p>Protein Size: 379</p>
Molecular Weight:	43 kDa
Gene ID:	2592
NCBI Accession:	NM_000155 , NP_000146
UniProt:	P07902

Application Details

Application Notes:	Optimal working dilutions should be determined experimentally by the investigator.
Comment:	Antigen size: 379 AA
Restrictions:	For Research Use only

Handling

Format:	Liquid
Concentration:	Lot specific
Buffer:	Liquid. Purified antibody supplied in 1x PBS buffer with 0.09 % (w/v) sodium azide and 2 % sucrose.

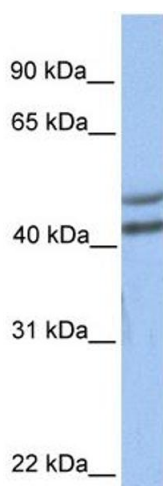
Handling

Preservative:	Sodium azide
Precaution of Use:	This product contains Sodium azide: a POISONOUS AND HAZARDOUS SUBSTANCE which should be handled by trained staff only.
Handling Advice:	Avoid repeated freeze-thaw cycles.
Storage:	-20 °C
Storage Comment:	For short term use, store at 2-8°C up to 1 week. For long term storage, store at -20°C in small aliquots to prevent freeze-thaw cycles.

Publications

Product cited in:	<p>Sharma, Burdon, Chidlow, Klebe, Crawford, Dimasi, Dave, Martin, Javadiyan, Wood, Casson, Danoy, Griggs, Hewitt, Landers, Mitchell, Mackey, Craig: "Association of genetic variants in the TMC01 gene with clinical parameters related to glaucoma and characterization of the protein in the eye." in: Investigative ophthalmology & visual science, Vol. 53, Issue 8, pp. 4917-25, (2012) (PubMed).</p> <p>Burdon, Macgregor, Hewitt, Sharma, Chidlow, Mills, Danoy, Casson, Viswanathan, Liu, Landers, Henders, Wood, Souzeau, Crawford, Leo, Wang, Rochtchina, Nyholt, Martin, Montgomery, Mitchell, Brown et al.: "Genome-wide association study identifies susceptibility loci for open angle glaucoma at TMC01 and CDKN2B-AS1. ..." in: Nature genetics, Vol. 43, Issue 6, pp. 574-8, (2011) (PubMed).</p>
-------------------	---

Images



Western Blotting

Image 1. WB Suggested Anti-GALT Antibody Titration: 0.2-1 ug/ml Positive Control: Human brain