

Datasheet for ABIN2783397
anti-NAA30 antibody (Middle Region)[Go to Product page](#)

1 Image

Overview

Quantity:	100 µL
Target:	NAA30
Binding Specificity:	Middle Region
Reactivity:	Mouse, Human, Cow, Dog, Horse, Pig, Rabbit, Rat
Host:	Rabbit
Clonality:	Polyclonal
Conjugate:	This NAA30 antibody is un-conjugated
Application:	Western Blotting (WB)

Product Details

Immunogen:	The immunogen is a synthetic peptide directed towards the middle region of human NAT12
Sequence:	EQVRLSSSL TADCSLRSPS GREVEPGEDR TIRYVRYESE LQMPDIMRLI
Predicted Reactivity:	Cow: 100%, Dog: 100%, Horse: 100%, Human: 100%, Mouse: 91%, Pig: 100%, Rabbit: 93%, Rat: 91%
Characteristics:	This is a rabbit polyclonal antibody against NAT12. It was validated on Western Blot using a cell lysate as a positive control.
Purification:	Affinity Purified

Target Details

Target:	NAA30
---------	-------

Target Details

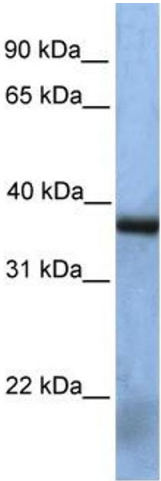
Alternative Name:	NAT12 (NAA30 Products)
Background:	<p>NAT12 belongs to the acetyltransferase family, MAK3 subfamily. It contains 1 N-acetyltransferase domain. It is a probable N-acetyltransferase.</p> <p>Alias Symbols: C14orf35, FLJ35355, MAK3, MGC141884, MGC141885, Mak3p, NAT12</p> <p>Protein Interaction Partner: UBC,</p> <p>Protein Size: 362</p>
Molecular Weight:	39 kDa
Gene ID:	122830
NCBI Accession:	NM_001011713 , NP_001011713
UniProt:	Q147X3

Application Details

Application Notes:	Optimal working dilutions should be determined experimentally by the investigator.
Comment:	Antigen size: 362 AA
Restrictions:	For Research Use only

Handling

Format:	Liquid
Concentration:	Lot specific
Buffer:	Liquid. Purified antibody supplied in 1x PBS buffer with 0.09 % (w/v) sodium azide and 2 % sucrose.
Preservative:	Sodium azide
Precaution of Use:	This product contains Sodium azide: a POISONOUS AND HAZARDOUS SUBSTANCE which should be handled by trained staff only.
Handling Advice:	Avoid repeated freeze-thaw cycles.
Storage:	-20 °C
Storage Comment:	For short term use, store at 2-8°C up to 1 week. For long term storage, store at -20°C in small aliquots to prevent freeze-thaw cycles.



Western Blotting

Image 1. WB Suggested Anti-NAT12 Antibody Titration:
0.2-1 ug/ml Positive Control: Human heart