

Datasheet for ABIN2783407  
**anti-SULT6B1 antibody (C-Term)**[Go to Product page](#)

## 1 Image

## Overview

Quantity:	100 µL
Target:	SULT6B1
Binding Specificity:	C-Term
Reactivity:	Human, Guinea Pig, Horse, Mouse, Cow, Dog, Rabbit, Rat
Host:	Rabbit
Clonality:	Polyclonal
Conjugate:	This SULT6B1 antibody is un-conjugated
Application:	Western Blotting (WB)

## Product Details

Immunogen:	The immunogen is a synthetic peptide directed towards the C terminal region of human SULT6B1
Sequence:	FLGFFLTGEQ IQTISVQSTF QAMRAKSQDT HGAVGPFLFR KGEVGDWKNL
Predicted Reactivity:	Cow: 93%, Dog: 92%, Guinea Pig: 86%, Horse: 86%, Human: 100%, Mouse: 79%, Rabbit: 92%, Rat: 86%
Characteristics:	This is a rabbit polyclonal antibody against SULT6B1. It was validated on Western Blot using a cell lysate as a positive control.
Purification:	Affinity Purified

## Target Details

Target:	SULT6B1
---------	---------

## Target Details

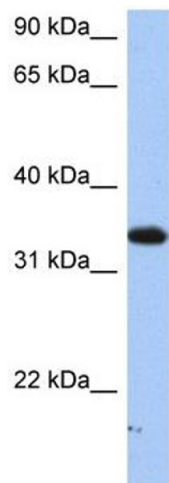
Alternative Name:	SULT6B1 ( <a href="#">SULT6B1 Products</a> )
Background:	SULT6B1 belongs to the sulfotransferase 1 family. SULT6B1 may catalyze the sulfate conjugation of many drugs, xenobiotic compounds, hormones, and neurotransmitters. Alias Symbols: - Protein Size: 265
Molecular Weight:	30 kDa
Gene ID:	391365
NCBI Accession:	<a href="#">NM_001032377</a> , <a href="#">NP_001027549</a>
UniProt:	<a href="#">Q6IMI4</a>

## Application Details

Application Notes:	Optimal working dilutions should be determined experimentally by the investigator.
Comment:	Antigen size: 265 AA
Restrictions:	For Research Use only

## Handling

Format:	Liquid
Concentration:	Lot specific
Buffer:	Liquid. Purified antibody supplied in 1x PBS buffer with 0.09 % (w/v) sodium azide and 2 % sucrose.
Preservative:	Sodium azide
Precaution of Use:	This product contains Sodium azide: a POISONOUS AND HAZARDOUS SUBSTANCE which should be handled by trained staff only.
Handling Advice:	Avoid repeated freeze-thaw cycles.
Storage:	-20 °C
Storage Comment:	For short term use, store at 2-8°C up to 1 week. For long term storage, store at -20°C in small aliquots to prevent freeze-thaw cycles.



Western Blotting

**Image 1.** WB Suggested Anti-SULT6B1 Antibody Titration:  
0.2-1 ug/ml Positive Control: HepG2 cell lysate