

Datasheet for ABIN2783416
anti-GATM antibody (Middle Region)

6 Images

[Go to Product page](#)

Overview

| | |
|----------------------|--|
| Quantity: | 100 µL |
| Target: | GATM |
| Binding Specificity: | Middle Region |
| Reactivity: | Human, Mouse, Rat, Dog, Guinea Pig, Horse, Rabbit, Cow, Sheep, Zebrafish (Danio rerio) |
| Host: | Rabbit |
| Clonality: | Polyclonal |
| Conjugate: | This GATM antibody is un-conjugated |
| Application: | Western Blotting (WB) |

Product Details

| | |
|-----------------------|--|
| Immunogen: | The immunogen is a synthetic peptide directed towards the middle region of human GATM |
| Sequence: | PCFDAADFIR AGRDIFAQRS QVTNYLGIEW MRRHLAPDYR VHISFKDPN |
| Predicted Reactivity: | Cow: 93%, Dog: 100%, Guinea Pig: 100%, Horse: 100%, Human: 100%, Mouse: 100%, Rabbit: 93%, Rat: 100%, Sheep: 93%, Zebrafish: 92% |
| Characteristics: | This is a rabbit polyclonal antibody against GATM. It was validated on Western Blot using a cell lysate as a positive control. |
| Purification: | Affinity Purified |

Target Details

| | |
|---------|------|
| Target: | GATM |
|---------|------|

Target Details

Alternative Name: GATM ([GATM Products](#))

Background: GATM is a mitochondrial enzyme that belongs to the amidinotransferase family. This enzyme is involved in creatine biosynthesis, whereby it catalyzes the transfer of a guanido group from L-arginine to glycine, resulting in guanidinoacetic acid, the immediate precursor of creatine. Mutations in this gene cause arginine:glycine amidinotransferase deficiency, an inborn error of creatine synthesis characterized by mental retardation, language impairment, and behavioral disorders. This gene encodes a mitochondrial enzyme that belongs to the amidinotransferase family. This enzyme is involved in creatine biosynthesis, whereby it catalyzes the transfer of a guanido group from L-arginine to glycine, resulting in guanidinoacetic acid, the immediate precursor of creatine. Mutations in this gene cause arginine:glycine amidinotransferase deficiency, an inborn error of creatine synthesis characterized by mental retardation, language impairment, and behavioral disorders. Publication Note: This RefSeq record includes a subset of the publications that are available for this gene. Please see the Entrez Gene record to access additional publications.

Alias Symbols: AGAT, AT

Protein Interaction Partner: CYP2E1, Gatm,

Protein Size: 423

Molecular Weight: 44 kDa

Gene ID: 2628

NCBI Accession: [NM_001482](#), [NP_001473](#)

UniProt: [P50440](#)

Application Details

Application Notes: Optimal working dilutions should be determined experimentally by the investigator.

Comment: Antigen size: 423 AA

Restrictions: For Research Use only

Handling

Format: Liquid

Concentration: Lot specific

Buffer: Liquid. Purified antibody supplied in 1x PBS buffer with 0.09 % (w/v) sodium azide and 2 % sucrose.

Handling

| | |
|--------------------|---|
| Preservative: | Sodium azide |
| Precaution of Use: | This product contains Sodium azide: a POISONOUS AND HAZARDOUS SUBSTANCE which should be handled by trained staff only. |
| Handling Advice: | Avoid repeated freeze-thaw cycles. |
| Storage: | -20 °C |
| Storage Comment: | For short term use, store at 2-8°C up to 1 week. For long term storage, store at -20°C in small aliquots to prevent freeze-thaw cycles. |

Images

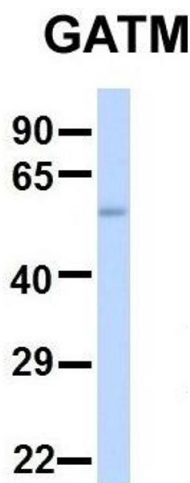


Western Blotting

Image 1. WB Suggested Anti-GATM Antibody Titration: 0.2-1 ug/ml ELISA Titer: 1:62500 Positive Control: 721_B cell lysate GATM is strongly supported by BioGPS gene expression data to be expressed in Human 721_B cells

Western Blotting

Image 2. Host: Rabbit Target Name: GNAS Sample Type: Human Fetal Heart Antibody Dilution: 1.0ug/ml



Western Blotting

Image 3. Host: Rabbit Target Name: SERPINA3 Sample Type: Human Adult Placenta Antibody Dilution: 1.0ug/ml

Please check the [product details page](#) for more images. Overall 6 images are available for ABIN2783416.