



[Go to Product page](#)

Datasheet for ABIN2783423

anti-Laminin beta 1 antibody (Middle Region)

2 Images

1 Publication

Overview

| | |
|----------------------|---|
| Quantity: | 100 µL |
| Target: | Laminin beta 1 (LAMB1) |
| Binding Specificity: | Middle Region |
| Reactivity: | Human, Mouse, Rat, Rabbit, Dog, Guinea Pig, Horse, Cow, Pig, Saccharomyces cerevisiae |
| Host: | Rabbit |
| Clonality: | Polyclonal |
| Conjugate: | This Laminin beta 1 antibody is un-conjugated |
| Application: | Western Blotting (WB) |

Product Details

| | |
|-----------------------|---|
| Immunogen: | The immunogen is a synthetic peptide directed towards the middle region of human LAMB1 |
| Sequence: | VEELKRKAAQ NSGEAEYIEK VVYTVKQSAE DVKKTLDGEL DEKYKKVENL |
| Predicted Reactivity: | Cow: 93%, Dog: 79%, Guinea Pig: 86%, Horse: 100%, Human: 100%, Mouse: 100%, Pig: 93%, Rabbit: 85%, Rat: 100%, Yeast: 75% |
| Characteristics: | This is a rabbit polyclonal antibody against LAMB1. It was validated on Western Blot using a cell lysate as a positive control. |
| Purification: | Affinity Purified |

Target Details

| | |
|---------|------------------------|
| Target: | Laminin beta 1 (LAMB1) |
|---------|------------------------|

Target Details

| | |
|-------------------|---|
| Alternative Name: | LAMB1 (LAMB1 Products) |
| Background: | <p>Laminins, a family of extracellular matrix glycoproteins, are the major noncollagenous constituent of basement membranes. They have been implicated in a wide variety of biological processes including cell adhesion, differentiation, migration, signaling, n</p> <p>Alias Symbols: CLM, MGC142015</p> <p>Protein Interaction Partner: PA2G4, ANTXR2, KIAA1033, POLR2E, HECW2, ERBB2IP, UBC, PDIA3, DPY30, HSPD1, NQO1, FBXO6, ATXN7L2, GF11B, Lama1, LAMC1, Ogg1, EIF3I, ATXN7, CACNA1A, TGFB1, COL6A1, ACHE,</p> <p>Protein Size: 1786</p> |
| Molecular Weight: | 198 kDa |
| Gene ID: | 3912 |
| NCBI Accession: | NM_002291 , NP_002282 |
| UniProt: | P07942 |

Application Details

| | |
|--------------------|--|
| Application Notes: | Optimal working dilutions should be determined experimentally by the investigator. |
| Comment: | Antigen size: 1786 AA |
| Restrictions: | For Research Use only |

Handling

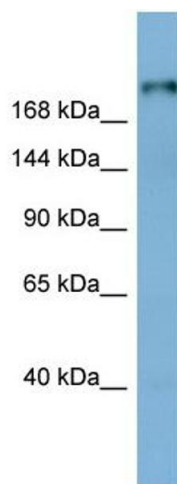
| | |
|--------------------|--|
| Format: | Liquid |
| Concentration: | Lot specific |
| Buffer: | Liquid. Purified antibody supplied in 1x PBS buffer with 0.09 % (w/v) sodium azide and 2 % sucrose. |
| Preservative: | Sodium azide |
| Precaution of Use: | This product contains Sodium azide: a POISONOUS AND HAZARDOUS SUBSTANCE which should be handled by trained staff only. |
| Handling Advice: | Avoid repeated freeze-thaw cycles. |
| Storage: | -20 °C |
| Storage Comment: | For short term use, store at 2-8°C up to 1 week. For long term storage, store at -20°C in small |

aliquots to prevent freeze-thaw cycles.

Publications

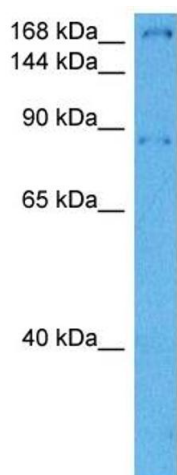
Product cited in: Hamada, Tashiro, Tada, Inazawa, Shirozu, Shibahara, Nakamura, Martina, Nakano, Honjo: " Isolation and characterization of a novel secretory protein, stromal cell-derived factor-2 (SDF-2) using the signal sequence trap method." in: **Gene**, Vol. 176, Issue 1-2, pp. 211-4, (1997) ([PubMed](#)).

Images



Western Blotting

Image 1. WB Suggested Anti-LAMB1 Antibody Titration: 0.2-1 ug/ml ELISA Titer: 1:62500 Positive Control: Human Stomach



Western Blotting

Image 2. Host: Rabbit Target Name: LAMB1 Sample Tissue: Mouse Heart Antibody Dilution: 1ug/ml