

Datasheet for ABIN2783434  
**anti-NAA10 antibody (Middle Region)**[Go to Product page](#)

## 1 Image

## Overview

Quantity:	100 µL
Target:	NAA10 (ARD1A)
Binding Specificity:	Middle Region
Reactivity:	Human, Mouse, Rat, Cow, Guinea Pig, Horse, Rabbit, Dog
Host:	Rabbit
Clonality:	Polyclonal
Conjugate:	This NAA10 antibody is un-conjugated
Application:	Western Blotting (WB)

## Product Details

Immunogen:	The immunogen is a synthetic peptide directed towards the middle region of human ARD1A
Sequence:	VESKGNPPS SGEACREEKG LAAEDSGGDS KDLSEVSETT ESTDVKDSSE
Predicted Reactivity:	Cow: 100%, Dog: 93%, Guinea Pig: 100%, Horse: 100%, Human: 100%, Mouse: 100%, Rabbit: 100%, Rat: 100%
Characteristics:	This is a rabbit polyclonal antibody against ARD1A. It was validated on Western Blot using a cell lysate as a positive control.
Purification:	Affinity Purified

## Target Details

Target:	NAA10 (ARD1A)
---------	---------------

## Target Details

Alternative Name: ARD1A ([ARD1A Products](#))

Background: N-alpha-acetylation is one of the most common protein modifications that occurs during protein synthesis and involves the transfer of an acetyl group from acetyl-coenzyme A to the protein alpha-amino group. ARD1A, together with NATH (NARG1, MIM 608000), is part of a major N-alpha-acetyltransferase complex responsible for alpha-acetylation of proteins and peptides. N-alpha-acetylation is one of the most common protein modifications that occurs during protein synthesis and involves the transfer of an acetyl group from acetyl-coenzyme A to the protein alpha-amino group. ARD1A, together with NATH (NARG1, MIM 608000), is part of a major N-alpha-acetyltransferase complex responsible for alpha-acetylation of proteins and peptides (Sanchez-Puig and Fersht, 2006 [PubMed 16823041]). [supplied by OMIM]. Publication Note: This RefSeq record includes a subset of the publications that are available for this gene. Please see the Entrez Gene record to access additional publications.

Alias Symbols: ARD1, DXS707, MGC71248, TE2, NATD, ARD1A

Protein Interaction Partner: FIP1L1, CEP44, BCOR, KIFAP3, EHMT2, RBCK1, CALCOCO2, PDE4DIP, ZBTB14, UBC, MEOX2, KRTAP10-3, KRTAP10-5, KRTAP10-7, SSX2IP, RAB3IP, PSME2, PSME1, NAA50, DDI2, NAA15, VPS29, VPS26A, NMI, STAT1, PXN, NAA16, ARRB2, Naa10, HIF1A, NAT2, CDC25A, NAT1, MTA1,

Protein Size: 235

Molecular Weight: 26 kDa

Gene ID: 8260

NCBI Accession: [NM\\_003491](#), [NP\\_003482](#)

UniProt: [P41227](#)

## Application Details

Application Notes: Optimal working dilutions should be determined experimentally by the investigator.

Comment: Antigen size: 235 AA

Restrictions: For Research Use only

## Handling

Format: Liquid

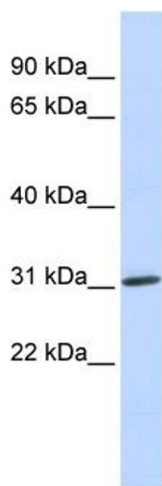
Concentration: Lot specific

Buffer: Liquid. Purified antibody supplied in 1x PBS buffer with 0.09 % (w/v) sodium azide and 2 %

## Handling

	sucrose.
Preservative:	Sodium azide
Precaution of Use:	This product contains Sodium azide: a POISONOUS AND HAZARDOUS SUBSTANCE which should be handled by trained staff only.
Handling Advice:	Avoid repeated freeze-thaw cycles.
Storage:	-20 °C
Storage Comment:	For short term use, store at 2-8°C up to 1 week. For long term storage, store at -20°C in small aliquots to prevent freeze-thaw cycles.

## Images



### Western Blotting

**Image 1.** WB Suggested Anti-ARD1A Antibody Titration: 0.2-1 ug/ml ELISA Titer: 1:312500 Positive Control: Human heart