

Datasheet for ABIN2783439  
**anti-GYG antibody (C-Term)**[Go to Product page](#)

## 3 Images

## Overview

|                      |   |
|----------------------|---|
| Quantity:            | 100 µL  |
| Target:              | GYG   |
| Binding Specificity: | C-Term  |
| Reactivity:          | Human, Mouse, Cow, Dog, Guinea Pig, Horse, Rabbit, Rat, Zebrafish (Danio rerio) |
| Host:                | Rabbit  |
| Clonality:           | Polyclonal  |
| Conjugate:           | This GYG antibody is un-conjugated  |
| Application:         | Western Blotting (WB)   |

## Product Details

|                       |   |
|-----------------------|---|
| Immunogen:            | The immunogen is a synthetic peptide corresponding to a region of Mouse   |
| Sequence:             | SDLSFGEAPA APQPSMSSEE RKERWEQGQA DYMGADSF DN IKRKLD TYLQ  |
| Predicted Reactivity: | Cow: 100%, Dog: 100%, Guinea Pig: 100%, Horse: 100%, Human: 100%, Mouse: 100%, Rabbit: 93%, Rat: 100%, Zebrafish: 82% |
| Characteristics:      | This is a rabbit polyclonal antibody against Gyg. It was validated on Western Blot.                                   |
| Purification:         | Affinity Purified   |

## Target Details

|                   |                                      |
|-------------------|--------------------------------------|
| Target:           | GYG                                  |
| Alternative Name: | Gyg ( <a href="#">GYG Products</a> ) |

## Target Details

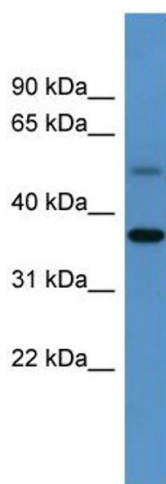
|                   |   |
|-------------------|---|
| Background:       | Self-glucosylates, via an inter-subunit mechanism, to form an oligosaccharide primer that serves as substrate for glycogen synthase.<br>Alias Symbols: AU017667, Gyg1<br>Protein Interaction Partner: Mfap5,<br>Protein Size: 333 |
| Molecular Weight: | 37 kDa  |
| Gene ID:          | 27357   |
| NCBI Accession:   | <a href="#">NM_013755</a> , <a href="#">NP_038783</a>   |
| UniProt:          | <a href="#">Q9R062</a>  |
| Pathways:         | <a href="#">Cellular Glucan Metabolic Process</a>   |

## Application Details

|                    |  |
|--------------------|--|
| Application Notes: | Optimal working dilutions should be determined experimentally by the investigator. |
| Comment:           | Antigen size: 333 AA   |
| Restrictions:      | For Research Use only  |

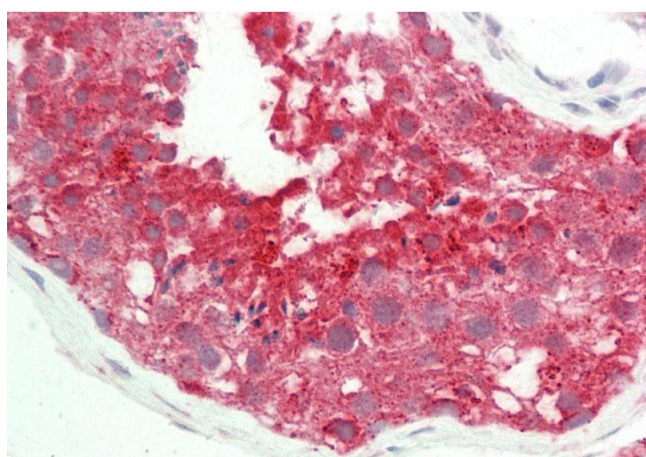
## Handling

|                    |   |
|--------------------|---|
| Format:            | Liquid  |
| Concentration:     | Lot specific  |
| Buffer:            | Liquid. Purified antibody supplied in 1x PBS buffer with 0.09 % (w/v) sodium azide and 2 % sucrose.                                     |
| Preservative:      | Sodium azide  |
| Precaution of Use: | This product contains Sodium azide: a POISONOUS AND HAZARDOUS SUBSTANCE which should be handled by trained staff only.                  |
| Handling Advice:   | Avoid repeated freeze-thaw cycles.  |
| Storage:           | -20 °C  |
| Storage Comment:   | For short term use, store at 2-8°C up to 1 week. For long term storage, store at -20°C in small aliquots to prevent freeze-thaw cycles. |



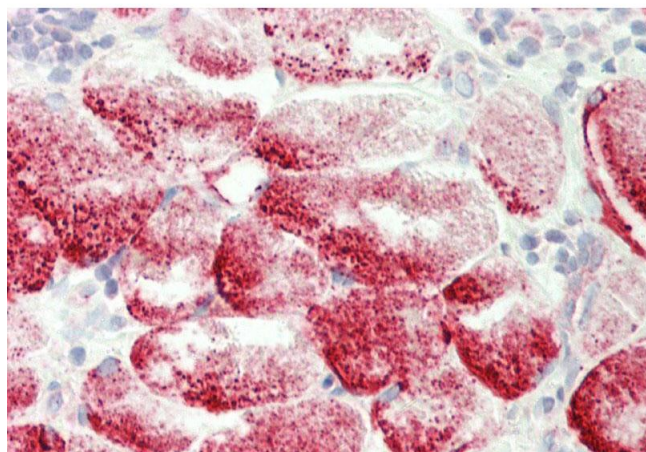
#### Western Blotting

**Image 1.** WB Suggested Anti-Gyg Antibody Titration: 0.2-1 ug/ml ELISA Titer: 1:62500 Positive Control: Mouse Kidney



#### Immunohistochemistry

**Image 2.** Rabbit Anti-Gyg antibody Formalin Fixed Paraffin Embedded Tissue: Human Testis Primary antibody Concentration: 1:100 Secondary Antibody: Donkey anti-Rabbit-Cy3 Secondary Antibody Concentration: 1:200 Magnification: 20x Exposure Time: 0.5-2.0sec



#### Immunohistochemistry

**Image 3.** Rabbit Anti-Gyg antibody Formalin Fixed Paraffin Embedded Tissue: Human Tonsil, Skeletal Myocytes Primary antibody Concentration: 1:100 Secondary Antibody: Donkey anti-Rabbit-Cy3 Secondary Antibody Concentration: 1:200 Magnification: 20x Exposure Time: 0.5-2.0sec