

Datasheet for ABIN2783443

anti-MAP4K2 antibody (N-Term)[Go to Product page](#)**1** Image

Overview

Quantity:	100 µL
Target:	MAP4K2
Binding Specificity:	N-Term
Reactivity:	Human, Mouse, Rat, Cow, Guinea Pig, Zebrafish (Danio rerio), Dog, Horse, Pig, Rabbit
Host:	Rabbit
Clonality:	Polyclonal
Conjugate:	This MAP4K2 antibody is un-conjugated
Application:	Western Blotting (WB)

Product Details

Immunogen:	The immunogen is a synthetic peptide directed towards the N terminal region of human MAP4K2
Sequence:	HLHPMRALML MSKSSFQPPK LRDKTRWTQN FHHFLKLALT KNPKKRPTAE
Predicted Reactivity:	Cow: 100%, Dog: 93%, Guinea Pig: 85%, Horse: 100%, Human: 100%, Mouse: 100%, Pig: 93%, Rabbit: 85%, Rat: 100%, Zebrafish: 92%
Characteristics:	This is a rabbit polyclonal antibody against MAP4K2. It was validated on Western Blot using a cell lysate as a positive control.
Purification:	Affinity Purified

Target Details

Target:	MAP4K2
---------	--------

Target Details

Alternative Name:	MAP4K2 (MAP4K2 Products)
Background:	<p>MAP4K2 is a member of the serine/threonine protein kinase family. Although this kinase is found in many tissues, its expression in lymphoid follicles is restricted to the cells of germinal centre, where it may participate in B-cell differentiation. This kinase can be activated by TNF-alpha, and has been shown to specifically activate MAP kinases. This kinase is also found to interact with TNF receptor-associated factor 2 (TRAF2), which is involved in the activation of MAP3K1/MEKK1. The protein encoded by this gene is a member of the serine/threonine protein kinase family. Although this kinase is found in many tissues, its expression in lymphoid follicles is restricted to the cells of germinal centre, where it may participate in B-cell differentiation. This kinase can be activated by TNF-alpha, and has been shown to specifically activate MAP kinases. This kinase is also found to interact with TNF receptor-associated factor 2 (TRAF2), which is involved in the activation of MAP3K1/MEKK1.</p> <p>Alias Symbols: BL44, GCK, RAB8IP</p> <p>Protein Interaction Partner: HSP90AA1, UBC, MAP3K11, MAP3K1, POT1, MCM3AP-AS1, NACAD, SNRNP35, PRDX4, SERPINA4, HNRNPA2B1, XRCC6, DEFB1, TRAF2, RAB8A, MAP2K4,</p> <p>Protein Size: 820</p>
Molecular Weight:	91 kDa
Gene ID:	5871
NCBI Accession:	NM_004579 , NP_004570
UniProt:	Q12851

Application Details

Application Notes:	Optimal working dilutions should be determined experimentally by the investigator.
Comment:	Antigen size: 820 AA
Restrictions:	For Research Use only

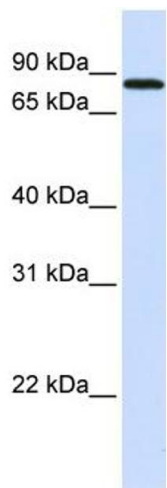
Handling

Format:	Liquid
Concentration:	Lot specific
Buffer:	Liquid. Purified antibody supplied in 1x PBS buffer with 0.09 % (w/v) sodium azide and 2 % sucrose.

Handling

Preservative:	Sodium azide
Precaution of Use:	This product contains Sodium azide: a POISONOUS AND HAZARDOUS SUBSTANCE which should be handled by trained staff only.
Handling Advice:	Avoid repeated freeze-thaw cycles.
Storage:	-20 °C
Storage Comment:	For short term use, store at 2-8°C up to 1 week. For long term storage, store at -20°C in small aliquots to prevent freeze-thaw cycles.

Images



Western Blotting

Image 1. WB Suggested Anti-MAP4K2 Antibody Titration: 0.2-1 ug/ml ELISA Titer: 1:312500 Positive Control: Human Liver