

Datasheet for ABIN2783447
anti-PNPLA4 antibody (C-Term)



[Go to Product page](#)

1 Image

Overview

Quantity:	100 µL
Target:	PNPLA4
Binding Specificity:	C-Term
Reactivity:	Human, Pig, Cow, Dog, Horse, Guinea Pig, Rat
Host:	Rabbit
Clonality:	Polyclonal
Conjugate:	This PNPLA4 antibody is un-conjugated
Application:	Western Blotting (WB)

Product Details

Immunogen:	The immunogen is a synthetic peptide directed towards the C terminal region of human PNPLA4
Sequence:	SPFSGRLDIS PQDKGQLDLY VNIAKQDIML SLANLVRLNQ ALFPPSKRKM
Predicted Reactivity:	Cow: 100%, Dog: 100%, Guinea Pig: 86%, Horse: 100%, Human: 100%, Pig: 100%, Rat: 86%
Characteristics:	This is a rabbit polyclonal antibody against PNPLA4. It was validated on Western Blot using a cell lysate as a positive control.
Purification:	Affinity Purified

Target Details

Target:	PNPLA4
---------	--------

Target Details

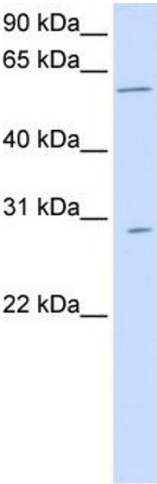
Alternative Name:	PNPLA4 (PNPLA4 Products)
Background:	<p>PNPLA4 is a keratinocyte retinyl ester hydrolase. The protein also catalyzes fatty acyl CoA-dependent and -independent retinol esterification, using triolein as substrate and generates diacylglyceride and free fatty acid.</p> <p>Alias Symbols: DXS1283E, GS2</p> <p>Protein Size: 253</p>
Molecular Weight:	28 kDa
Gene ID:	8228
NCBI Accession:	NM_004650 , NP_004641
UniProt:	P41247

Application Details

Application Notes:	Optimal working dilutions should be determined experimentally by the investigator.
Comment:	Antigen size: 253 AA
Restrictions:	For Research Use only

Handling

Format:	Liquid
Concentration:	Lot specific
Buffer:	Liquid. Purified antibody supplied in 1x PBS buffer with 0.09 % (w/v) sodium azide and 2 % sucrose.
Preservative:	Sodium azide
Precaution of Use:	This product contains Sodium azide: a POISONOUS AND HAZARDOUS SUBSTANCE which should be handled by trained staff only.
Handling Advice:	Avoid repeated freeze-thaw cycles.
Storage:	-20 °C
Storage Comment:	For short term use, store at 2-8°C up to 1 week. For long term storage, store at -20°C in small aliquots to prevent freeze-thaw cycles.



Western Blotting

Image 1. WB Suggested Anti-PNPLA4 Antibody Titration:
0.2-1 ug/ml ELISA Titer: 1:1562500 Positive Control:
Human Liver