

Datasheet for ABIN2783448
anti-PAPSS2 antibody (C-Term)[Go to Product page](#)

5 Images

1 Publication

Overview

Quantity:	100 µL
Target:	PAPSS2
Binding Specificity:	C-Term
Reactivity:	Human, Mouse, Rat, Cow, Dog, Guinea Pig, Horse, Rabbit, Zebrafish (Danio rerio)
Host:	Rabbit
Clonality:	Polyclonal
Conjugate:	This PAPSS2 antibody is un-conjugated
Application:	Western Blotting (WB), Immunohistochemistry (IHC)

Product Details

Immunogen:	The immunogen is a synthetic peptide directed towards the C terminal region of human PAPSS2
Sequence:	PARHNEFDI SGTRMRKLAR EGENPPDGFM APKAWKVLTD YYRSLEKN
Predicted Reactivity:	Cow: 100%, Dog: 100%, Guinea Pig: 100%, Horse: 100%, Human: 100%, Mouse: 93%, Rabbit: 100%, Rat: 100%, Zebrafish: 93%
Characteristics:	This is a rabbit polyclonal antibody against PAPSS2. It was validated on Western Blot using a cell lysate as a positive control.
Purification:	Affinity Purified

Target Details

Target:	PAPSS2
---------	--------

Target Details

Alternative Name:	PAPSS2 (PAPSS2 Products)
Background:	<p>Sulfation is a common modification of endogenous (lipids, proteins, and carbohydrates) and exogenous (xenobiotics and drugs) compounds. In mammals, the sulfate source is 3'-phosphoadenosine 5'-phosphosulfate (PAPS), created from ATP and inorganic sulfate. Two different tissue isoforms encoded by different genes synthesize PAPS. PAPSS2 is one of the two PAPS synthetases. Defects in this gene cause the Pakistani type of spondyloepimetaphyseal dysplasia. Two alternatively spliced transcript variants that encode different isoforms have been described for this gene.</p> <p>Sulfation is a common modification of endogenous (lipids, proteins, and carbohydrates) and exogenous (xenobiotics and drugs) compounds. In mammals, the sulfate source is 3'-phosphoadenosine 5'-phosphosulfate (PAPS), created from ATP and inorganic sulfate. Two different tissue isoforms encoded by different genes synthesize PAPS. This gene encodes one of the two PAPS synthetases. Defects in this gene cause the Pakistani type of spondyloepimetaphyseal dysplasia. Two alternatively spliced transcript variants that encode different isoforms have been described for this gene.</p> <p>Alias Symbols: ATPSK2, SK2</p> <p>Protein Interaction Partner: RIC8A, ARIH2, GTF3C4, TXNRD1, TUBB2A, HNRNPA2B1, APEX1, UBD, UBC, APP, Papss1, VHL,</p> <p>Protein Size: 619</p>
Molecular Weight:	70 kDa
Gene ID:	9060
NCBI Accession:	NM_001015880 , NP_001015880
Pathways:	Glycosaminoglycan Metabolic Process , Ribonucleoside Biosynthetic Process

Application Details

Application Notes:	Optimal working dilutions should be determined experimentally by the investigator.
Comment:	Antigen size: 619 AA
Restrictions:	For Research Use only

Handling

Format:	Liquid
Concentration:	Lot specific
Buffer:	Liquid. Purified antibody supplied in 1x PBS buffer with 0.09 % (w/v) sodium azide and 2 %

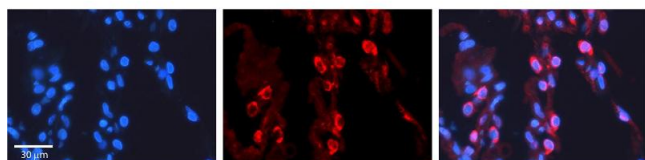
Handling

	sucrose.
Preservative:	Sodium azide
Precaution of Use:	This product contains Sodium azide: a POISONOUS AND HAZARDOUS SUBSTANCE which should be handled by trained staff only.
Handling Advice:	Avoid repeated freeze-thaw cycles.
Storage:	-20 °C
Storage Comment:	For short term use, store at 2-8°C up to 1 week. For long term storage, store at -20°C in small aliquots to prevent freeze-thaw cycles.

Publications

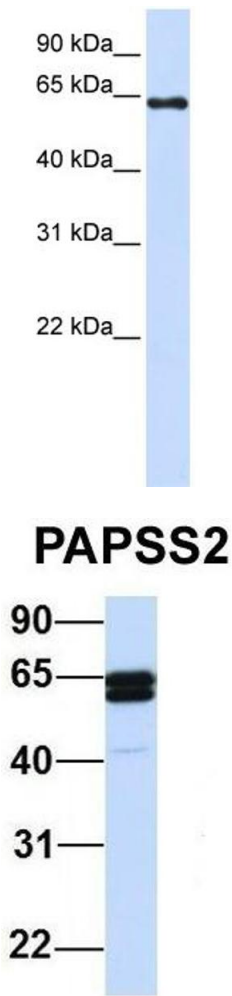
Product cited in:	Craxton: "Evolutionary genomics of plant genes encoding N-terminal-TM-C2 domain proteins and the similar FAM62 genes and synaptotagmin genes of metazoans." in: BMC genomics , Vol. 8, pp. 259, (2007) (PubMed).
-------------------	---

Images



Immunohistochemistry

Image 1. PAPSS2 antibody - C-terminal region Formalin Fixed Paraffin Embedded Tissue: Human Lung Tissue
Observed Staining: Cytoplasm of pneumocytes
Primary Antibody Concentration: 1:100 Secondary Antibody: Donkey anti-Rabbit-Cy3 Secondary Antibody Concentration: 1:200
Magnification: 20X Exposure Time: 0.5 - 2.0 sec



Western Blotting

Image 2. WB Suggested Anti-PAPSS2 Antibody Titration: 0.2-1 ug/ml ELISA Titer: 1:312500 Positive Control: 293T cell lysate

Western Blotting

Image 3. Host: Rabbit Target Name: PAPSS2 Sample Type: Human 721_B Antibody Dilution: 1.0ug/ml There is BioGPS gene expression data showing that PAPSS2 is expressed in 721_B

Please check the [product details page](#) for more images. Overall 5 images are available for ABIN2783448.