

Datasheet for ABIN2783457
anti-METTL1 antibody (Middle Region)[Go to Product page](#)

1 Image

Overview

| | |
|----------------------|---|
| Quantity: | 100 µL |
| Target: | METTL1 |
| Binding Specificity: | Middle Region |
| Reactivity: | Human, Mouse, Rat, Rabbit, Cow, Dog, Guinea Pig, Horse, Saccharomyces cerevisiae, Goat, Zebrafish (Danio rerio) |
| Host: | Rabbit |
| Clonality: | Polyclonal |
| Conjugate: | This METTL1 antibody is un-conjugated |
| Application: | Western Blotting (WB) |

Product Details

| | |
|-----------------------|--|
| Immunogen: | The immunogen is a synthetic peptide directed towards the middle region of human METTL1 |
| Sequence: | KGQLTKMFFL FPDPHFKRTK HKWRIISPTL LAEYAYVLRV GGLVYTITDV |
| Predicted Reactivity: | Cow: 100%, Dog: 100%, Goat: 100%, Guinea Pig: 100%, Horse: 100%, Human: 100%, Mouse: 100%, Rabbit: 100%, Rat: 100%, Yeast: 87%, Zebrafish: 93% |
| Characteristics: | This is a rabbit polyclonal antibody against METTL1. It was validated on Western Blot using a cell lysate as a positive control. |
| Purification: | Protein A purified |

Target Details

| | |
|---------|--------|
| Target: | METTL1 |
|---------|--------|

Target Details

| | |
|-------------------|--|
| Alternative Name: | METTL1 (METTL1 Products) |
| Background: | <p>METTL1 contains a conserved S-adenosylmethionine-binding motif and is inactivated by phosphorylation. This gene is similar in sequence to the <i>S. cerevisiae</i> YDL201w gene. The gene product contains a conserved S-adenosylmethionine-binding motif and is inactivated by phosphorylation. Alternative splice variants encoding different protein isoforms have been described for this gene. A pseudogene has been identified on chromosome X.</p> <p>Alias Symbols: C12orf1, TRM8, YDL201w</p> <p>Protein Interaction Partner: WDR4, AKT1, TRM8, PDLIM5, ARPC2, ACTR2, ACTR3, ARPC1B, ARPC4, ARPC5, TOM1L1, KIAA0101, UBE3A, TPD52L2, PRDX2, PRKDC, PRDX1, NUCB1, GTF2I, DR1, AARS, TP53RK, NIF3L1, CTPS2, NPLOC4, DNAAF5, IPO11, TPRKB, CACYBP, KIAA1279, METTL18, UBC, RPS6KA1, RPS6KA3,</p> <p>Protein Size: 301</p> |
| Molecular Weight: | 34 kDa |
| Gene ID: | 4234 |
| NCBI Accession: | NM_005371 , NP_005362 |
| UniProt: | Q9UBP6 |

Application Details

| | |
|--------------------|--|
| Application Notes: | Optimal working dilutions should be determined experimentally by the investigator. |
| Comment: | Antigen size: 301 AA |
| Restrictions: | For Research Use only |

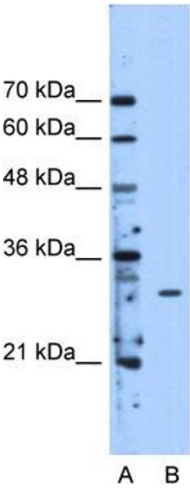
Handling

| | |
|--------------------|--|
| Format: | Liquid |
| Concentration: | Lot specific |
| Buffer: | Liquid. Purified antibody supplied in 1x PBS buffer with 0.09 % (w/v) sodium azide and 2 % sucrose. |
| Preservative: | Sodium azide |
| Precaution of Use: | This product contains Sodium azide: a POISONOUS AND HAZARDOUS SUBSTANCE which should be handled by trained staff only. |
| Handling Advice: | Avoid repeated freeze-thaw cycles. |

Handling

| | |
|------------------|---|
| Storage: | -20 °C |
| Storage Comment: | For short term use, store at 2-8°C up to 1 week. For long term storage, store at -20°C in small aliquots to prevent freeze-thaw cycles. |

Images



Western Blotting

Image 1. WB Suggested Anti-METTL1 Antibody Titration:
2.5ug/ml Positive Control: HepG2 cell lysate