

Datasheet for ABIN2783458

anti-SULT1E1 antibody (Middle Region)[2 Images](#)[2 Publications](#)[Go to Product page](#)

Overview

Quantity:	100 µL
Target:	SULT1E1
Binding Specificity:	Middle Region
Reactivity:	Human, Rat, Mouse, Dog, Horse, Guinea Pig, Rabbit
Host:	Rabbit
Clonality:	Polyclonal
Conjugate:	This SULT1E1 antibody is un-conjugated
Application:	Western Blotting (WB)

Product Details

Immunogen:	The immunogen is a synthetic peptide directed towards the middle region of human SULT1E1
Sequence:	LMVAGHPNPG SFPEFVEKFM QGQVPYGSWY KHVKSWWKEG KSPRVLFLFY
Predicted Reactivity:	Dog: 85%, Guinea Pig: 92%, Horse: 86%, Human: 100%, Mouse: 83%, Rabbit: 92%, Rat: 83%
Characteristics:	This is a rabbit polyclonal antibody against SULT1E1. It was validated on Western Blot using a cell lysate as a positive control.
Purification:	Affinity Purified

Target Details

Target:	SULT1E1
Alternative Name:	SULT1E1 (SULT1E1 Products)

Target Details

Background:	<p>Sulfotransferase enzymes catalyze the sulfate conjugation of many hormones, neurotransmitters, drugs, and xenobiotic compounds. These cytosolic enzymes are different in their tissue distributions and substrate specificities. The gene structure (number and length of exons) is similar among family members. This gene encodes a protein that transfers a sulfo moiety to and from estrone, which may control levels of estrogen receptors.</p> <p>Alias Symbols: EST, EST-1, MGC34459, STE, ST1E1</p> <p>Protein Interaction Partner: PDE9A, LRIF1, COPS6, RBM48, IGSF21, ENOX1, SETDB1, C14orf1, SULT2B1, UNC119, BMPR2, TP53, EEF1A1,</p> <p>Protein Size: 294</p>
Molecular Weight:	35 kDa
Gene ID:	6783
NCBI Accession:	NM_005420 , NP_005411
UniProt:	P49888
Pathways:	Steroid Hormone Biosynthesis

Application Details

Application Notes:	Optimal working dilutions should be determined experimentally by the investigator.
Comment:	Antigen size: 294 AA
Restrictions:	For Research Use only

Handling

Format:	Liquid
Concentration:	Lot specific
Buffer:	Liquid. Purified antibody supplied in 1x PBS buffer with 0.09 % (w/v) sodium azide and 2 % sucrose.
Preservative:	Sodium azide
Precaution of Use:	This product contains Sodium azide: a POISONOUS AND HAZARDOUS SUBSTANCE which should be handled by trained staff only.
Handling Advice:	Avoid repeated freeze-thaw cycles.
Storage:	-20 °C

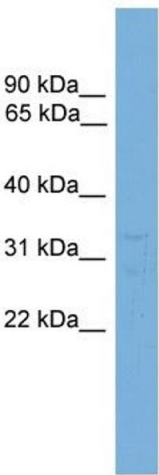
Handling

Storage Comment: For short term use, store at 2-8°C up to 1 week. For long term storage, store at -20°C in small aliquots to prevent freeze-thaw cycles.

Publications

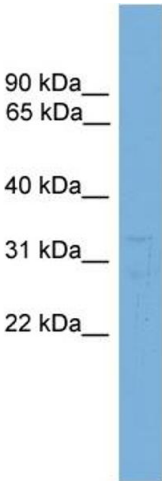
Product cited in: Craxton: "Evolutionary genomics of plant genes encoding N-terminal-TM-C2 domain proteins and the similar FAM62 genes and synaptotagmin genes of metazoans." in: **BMC genomics**, Vol. 8, pp. 259, (2007) ([PubMed](#)).

Images



Western Blotting

Image 1. WB Suggested Anti-SULT1E1 Antibody Titration: 0.2-1 ug/ml ELISA Titer: 1:62500 Positive Control: HepG2 cell lysate



Rabbit Anti-SULT1E1 Antibody
Catalog Number: ARP48669
Lot Number: QC18093
Lane: HepG2 Cell Lysate

Antibody Titration: 1.0µg/ml
Gel Concentration: 12%

Western Blotting

Image 2. WB Suggested Anti-SULT1E1 Antibody Titration: 0.2-1 µg/mL ELISA Titer: 1:2500 Positive Control: HepG2 cell lysate