

Datasheet for ABIN2783466
anti-POLD2 antibody (N-Term)



[Go to Product page](#)

1 Image

Overview

Quantity:	100 µL
Target:	POLD2
Binding Specificity:	N-Term
Reactivity:	Human, Rat, Mouse, Rabbit, Cow, Guinea Pig, Dog, Horse
Host:	Rabbit
Clonality:	Polyclonal
Conjugate:	This POLD2 antibody is un-conjugated
Application:	Western Blotting (WB)

Product Details

Immunogen:	The immunogen is a synthetic peptide directed towards the N terminal region of human POLD2
Sequence:	LREVSEEHNL LPQPPRSKYI HPDDELVLLED ELQRIKLKGT IDVSKLVTGT
Predicted Reactivity:	Cow: 100%, Dog: 93%, Guinea Pig: 100%, Horse: 93%, Human: 100%, Mouse: 100%, Rabbit: 86%, Rat: 100%
Characteristics:	This is a rabbit polyclonal antibody against POLD2. It was validated on Western Blot using a cell lysate as a positive control.
Purification:	Affinity Purified

Target Details

Target:	POLD2
---------	-------

Target Details

Alternative Name:	POLD2 (POLD2 Products)
Background:	<p>This protein is a DNA polymerase delta complex ,it involved in DNA replication and repair, and it consists of the proliferating cell nuclear antigen, the multisubunit replication factor C, and the 4 subunit polymerase complex: POLD1, POLD2, POLD3, and POLD4The DNA polymerase delta complex is involved in DNA replication and repair, and it consists of the proliferating cell nuclear antigen (PCNA, MIM 176740), the multisubunit replication factor C (see MIM 102579), and the 4 subunit polymerase complex: POLD1 (MIM 174761), POLD2, POLD3 (MIM 611415), and POLD4 (MIM 611525) (Liu and Warbrick, 2006 [PubMed 16934752]).[supplied by OMIM].</p> <p>Alias Symbols: -</p> <p>Protein Interaction Partner: UBC, SPRTN, FOXK1, FAM129A, XRN1, POLD1, MMS19, POLD4, CCHCR1, SOX12, EP300, UBD, BBLF2-BBLF3, POLD3, PCNA, POLDIP3, POLDIP2, KCTD13, WRNIP1, LSM6, WRN, CDK2, CDKN1A,</p> <p>Protein Size: 469</p>
Molecular Weight:	51 kDa
Gene ID:	5425
NCBI Accession:	NM_006230 , NP_006221
UniProt:	P49005
Pathways:	Telomere Maintenance , DNA Damage Repair , DNA Replication , Synthesis of DNA

Application Details

Application Notes:	Optimal working dilutions should be determined experimentally by the investigator.
Comment:	Antigen size: 469 AA
Restrictions:	For Research Use only

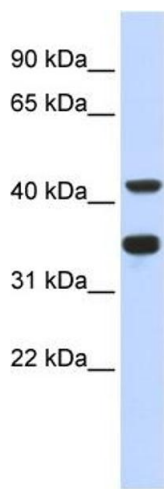
Handling

Format:	Liquid
Concentration:	Lot specific
Buffer:	Liquid. Purified antibody supplied in 1x PBS buffer with 0.09 % (w/v) sodium azide and 2 % sucrose.
Preservative:	Sodium azide
Precaution of Use:	This product contains Sodium azide: a POISONOUS AND HAZARDOUS SUBSTANCE which

Handling

	should be handled by trained staff only.
Handling Advice:	Avoid repeated freeze-thaw cycles.
Storage:	-20 °C
Storage Comment:	For short term use, store at 2-8°C up to 1 week. For long term storage, store at -20°C in small aliquots to prevent freeze-thaw cycles.

Images



Western Blotting

Image 1. WB Suggested Anti-POLD2 Antibody Titration: 0.2-1 ug/ml ELISA Titer: 1:312500 Positive Control: Human heart