

Datasheet for ABIN2783473

anti-SULT1C4 antibody (Middle Region)[Go to Product page](#)**1** Image

Overview

Quantity:	100 µL
Target:	SULT1C4
Binding Specificity:	Middle Region
Reactivity:	Human, Dog, Horse, Cow, Pig, Rabbit
Host:	Rabbit
Clonality:	Polyclonal
Conjugate:	This SULT1C4 antibody is un-conjugated
Application:	Western Blotting (WB)

Product Details

Immunogen:	The immunogen is a synthetic peptide directed towards the middle region of human SULT1C4
Sequence:	HEHVKGWWEA KDKHRILYLF YEDMKKNPKH EIQLAEFIG KKLDDKVLDK
Predicted Reactivity:	Cow: 93%, Dog: 86%, Horse: 86%, Human: 100%, Pig: 86%, Rabbit: 86%
Characteristics:	This is a rabbit polyclonal antibody against SULT1C4. It was validated on Western Blot using a cell lysate as a positive control.
Purification:	Affinity Purified

Target Details

Target:	SULT1C4
Alternative Name:	SULT1C4 (SULT1C4 Products)

Target Details

Background:	<p>SULT1C4 catalyzes the sulfate conjugation of many drugs, xenobiotic compounds, hormones, and neurotransmitters. It may be involved in the activation of carcinogenic hydroxylamines.</p> <p>SULT1C4 shows activity towards p-nitrophenol and N-hydroxy-2-acetylamino-fluorene (N-OH-2AAF).Sulfotransferase enzymes catalyze the sulfate conjugation of many hormones, neurotransmitters, drugs, and xenobiotic compounds. These cytosolic enzymes are different in their tissue distributions and substrate specificities. The gene structure (number and length of exons) is similar among family members. This gene encodes a protein that belongs to the SULT1 subfamily, responsible for transferring a sulfo moiety from PAPS to phenol-containing compounds.</p> <p>Alias Symbols: MGC149521, MGC34422, SULT1C, SULT1C2</p> <p>Protein Size: 302</p>
-------------	---

Molecular Weight:	35 kDa
-------------------	--------

Gene ID:	27233
----------	-------

NCBI Accession:	NM_006588 , NP_006579
-----------------	---

UniProt:	O75897
----------	------------------------

Application Details

Application Notes:	Optimal working dilutions should be determined experimentally by the investigator.
--------------------	--

Comment:	Antigen size: 302 AA
----------	----------------------

Restrictions:	For Research Use only
---------------	-----------------------

Handling

Format:	Liquid
---------	--------

Concentration:	Lot specific
----------------	--------------

Buffer:	Liquid. Purified antibody supplied in 1x PBS buffer with 0.09 % (w/v) sodium azide and 2 % sucrose.
---------	---

Preservative:	Sodium azide
---------------	--------------

Precaution of Use:	This product contains Sodium azide: a POISONOUS AND HAZARDOUS SUBSTANCE which should be handled by trained staff only.
--------------------	--

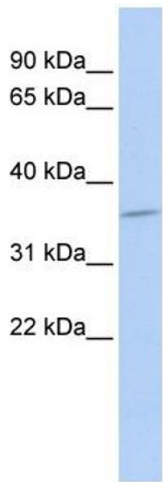
Handling Advice:	Avoid repeated freeze-thaw cycles.
------------------	------------------------------------

Storage:	-20 °C
----------	--------

Handling

Storage Comment: For short term use, store at 2-8°C up to 1 week. For long term storage, store at -20°C in small aliquots to prevent freeze-thaw cycles.

Images



Western Blotting

Image 1. WB Suggested Anti-SULT1C4 Antibody Titration: 0.2-1 ug/ml ELISA Titer: 1:62500 Positive Control: MCF7 cell lysate