

Datasheet for ABIN2783476  
**anti-SDF2 antibody (N-Term)**[Go to Product page](#)

3 Images

1 Publication

## Overview

Quantity:	100 µL
Target:	SDF2
Binding Specificity:	N-Term
Reactivity:	Human, Mouse, Rat, Cow, Dog, Guinea Pig, Horse, Rabbit, Zebrafish (Danio rerio), Goat
Host:	Rabbit
Clonality:	Polyclonal
Conjugate:	This SDF2 antibody is un-conjugated
Application:	Western Blotting (WB), Immunohistochemistry (IHC)

## Product Details

Immunogen:	The immunogen is a synthetic peptide directed towards the N terminal region of human SDF2
Sequence:	KLLNTRHNVR LSHSDVRYGS GSGQQSVTGV TSVDDSNSYW RIRGKSATVC
Predicted Reactivity:	Cow: 100%, Dog: 100%, Goat: 93%, Guinea Pig: 100%, Horse: 100%, Human: 100%, Mouse: 100%, Rabbit: 100%, Rat: 100%, Zebrafish: 100%
Characteristics:	This is a rabbit polyclonal antibody against SDF2. It was validated on Western Blot and immunohistochemistry.
Purification:	Protein A purified

## Target Details

Target:	SDF2
---------	------

## Target Details

Alternative Name:	SDF2 ( <a href="#">SDF2 Products</a> )
Background:	<p>SDF2 is believed to be a secretory protein. It has regions of similarity to hydrophilic segments of yeast mannosyltransferases. Its expression is ubiquitous and the gene appears to be relatively conserved among mammals. The protein encoded by this gene is believed to be a secretory protein. It has regions of similarity to hydrophilic segments of yeast mannosyltransferases. Its expression is ubiquitous and the gene appears to be relatively conserved among mammals.</p> <p>Alias Symbols: -</p> <p>Protein Interaction Partner: HNRNPD, env, SUMO1, DMWD,</p> <p>Protein Size: 211</p>
Molecular Weight:	21 kDa
Gene ID:	6388
NCBI Accession:	<a href="#">NM_006923</a> , <a href="#">NP_008854</a>
UniProt:	<a href="#">Q99470</a>
Pathways:	<a href="#">SARS-CoV-2 Protein Interactome</a>

## Application Details

Application Notes:	Optimal working dilutions should be determined experimentally by the investigator.
Comment:	Antigen size: 211 AA
Restrictions:	For Research Use only

## Handling

Format:	Liquid
Concentration:	Lot specific
Buffer:	Liquid. Purified antibody supplied in 1x PBS buffer with 0.09 % (w/v) sodium azide and 2 % sucrose.
Preservative:	Sodium azide
Precaution of Use:	This product contains Sodium azide: a POISONOUS AND HAZARDOUS SUBSTANCE which should be handled by trained staff only.
Handling Advice:	Avoid repeated freeze-thaw cycles.
Storage:	-20 °C

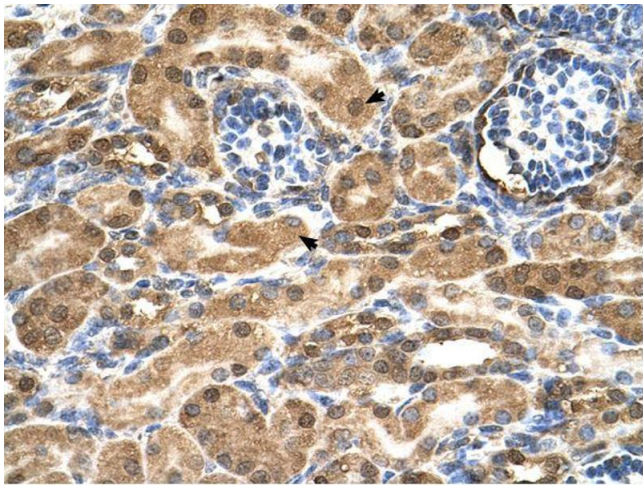
Handling

Storage Comment: For short term use, store at 2-8°C up to 1 week. For long term storage, store at -20°C in small aliquots to prevent freeze-thaw cycles.

Publications

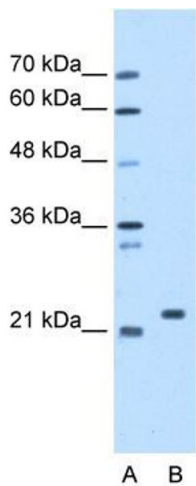
Product cited in: Lazrek, Goffard, Schanen, Karquel, Bocket, Lion, Devaux, Hedouin, Gosset, Hober: "Detection of hepatitis C virus antibodies and RNA among medicolegal autopsy cases in Northern France." in: **Diagnostic microbiology and infectious disease**, Vol. 55, Issue 1, pp. 55-8, (2006) ([PubMed](#)).

Images



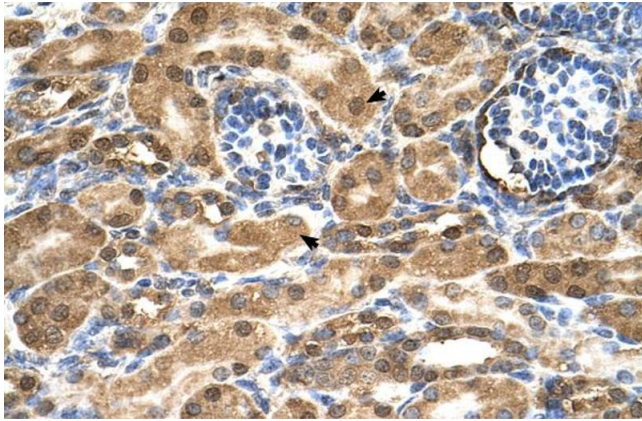
Immunohistochemistry

Image 1.



Western Blotting

**Image 2.** WB Suggested Anti-SDF2 Antibody Titration: 1.25ug/ml Positive Control: HepG2 cell lysate SDF2 is supported by BioGPS gene expression data to be expressed in HepG2



#### Immunohistochemistry

**Image 3.** Human kidney