

Datasheet for ABIN2783481

anti-POLR3A antibody (Middle Region)[Go to Product page](#)**1** Image

Overview

Quantity:	100 µL
Target:	POLR3A
Binding Specificity:	Middle Region
Reactivity:	Human, Mouse, Rat, Rabbit, Dog, Cow, Horse, Guinea Pig, Saccharomyces cerevisiae
Host:	Rabbit
Clonality:	Polyclonal
Conjugate:	This POLR3A antibody is un-conjugated
Application:	Western Blotting (WB)

Product Details

Immunogen:	The immunogen is a synthetic peptide directed towards the middle region of human POLR3A
Sequence:	AYFGQKDSVC GVSECIIMGI PMNIGTGLFK LLHKADRDPN PPKRPLIFDT
Predicted Reactivity:	Cow: 79%, Dog: 86%, Guinea Pig: 86%, Horse: 79%, Human: 100%, Mouse: 79%, Rabbit: 86%, Rat: 86%, Yeast: 85%
Characteristics:	This is a rabbit polyclonal antibody against POLR3A. It was validated on Western Blot using a cell lysate as a positive control.
Purification:	Affinity Purified

Target Details

Target:	POLR3A
---------	--------

Target Details

Alternative Name:	POLR3A (POLR3A Products)
Background:	<p>DNA-dependent RNA polymerase catalyzes the transcription of DNA into RNA using the four ribonucleoside triphosphates as substrates. POLR3A is the largest and catalytic core component of RNA polymerase III which synthesizes small RNAs, such as 5S rRNA and tRNAs. It forms the polymerase active center together with the second largest subunit. A single stranded DNA template strand of the promoter is positioned within the central active site cleft of Pol III. A bridging helix emanates from RPC1 and crosses the cleft near the catalytic site and is thought to promote translocation of Pol III by acting as a ratchet that moves the RNA-DNA hybrid through the active site by switching from straight to bent conformations at each step of nucleotide addition.</p> <p>Alias Symbols: RPC1, RPC155, hRPC155, ADDH, HLD7</p> <p>Protein Interaction Partner: SUMO2, UBC, ASB13, NEDD4, POLR3H, VPS18, POLR3B, POLR1D, CRCP, POLR1A, POLR3C, POLR1C, SMARCA5, POLR2H, POLR2E, POLR3D, IKBKG, PCBD1, EWSR1, RPAP2, RPAP3, RPAP1, GPN1, RAE1, POLR3E, PKP2, GTF2B,</p> <p>Protein Size: 1390</p>
Molecular Weight:	156 kDa
Gene ID:	11128
NCBI Accession:	NM_007055 , NP_008986
UniProt:	O14802

Application Details

Application Notes:	Optimal working dilutions should be determined experimentally by the investigator.
Comment:	Antigen size: 1390 AA
Restrictions:	For Research Use only

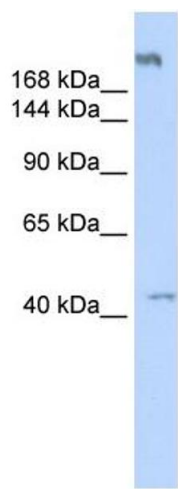
Handling

Format:	Liquid
Concentration:	Lot specific
Buffer:	Liquid. Purified antibody supplied in 1x PBS buffer with 0.09 % (w/v) sodium azide and 2 % sucrose.
Preservative:	Sodium azide

Handling

Precaution of Use:	This product contains Sodium azide: a POISONOUS AND HAZARDOUS SUBSTANCE which should be handled by trained staff only.
Handling Advice:	Avoid repeated freeze-thaw cycles.
Storage:	-20 °C
Storage Comment:	For short term use, store at 2-8°C up to 1 week. For long term storage, store at -20°C in small aliquots to prevent freeze-thaw cycles.

Images



Western Blotting

Image 1. WB Suggested Anti-POLR3A Antibody Titration: 0.2-1 ug/ml ELISA Titer: 1:312500 Positive Control: Human Muscle