

Datasheet for ABIN2783484  
**anti-NAT6 antibody (C-Term)**[Go to Product page](#)

## 1 Image

## Overview

Quantity:	100 µL
Target:	NAT6
Binding Specificity:	C-Term
Reactivity:	Human, Saccharomyces cerevisiae
Host:	Rabbit
Clonality:	Polyclonal
Conjugate:	This NAT6 antibody is un-conjugated
Application:	Western Blotting (WB)

## Product Details

Immunogen:	The immunogen is a synthetic peptide directed towards the C terminal region of human NAT6
Sequence:	GYQLGEPVQG LVFTSRRLPA TLLNAFPTAP SPRPPRKAPN LTAQAAPRGP
Predicted Reactivity:	Human: 100%, Yeast: 75%
Characteristics:	This is a rabbit polyclonal antibody against NAT6. It was validated on Western Blot using a cell lysate as a positive control.
Purification:	Affinity Purified

## Target Details

Target:	NAT6
Alternative Name:	NAT6 ( <a href="#">NAT6 Products</a> )

## Target Details

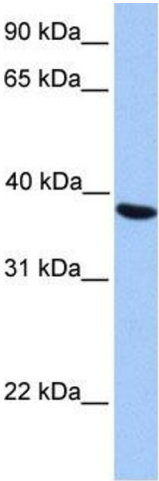
Background:	<p>NAT6 belongs to the acetyltransferase family. It contains 1 N-acetyltransferase domain. NAT6 seems to be involved in N-acetylation. Acts on peptides with a N-terminal Met followed by Asp/Glu/Asn. It may act as a tumor suppressor. Defects in NAT6 are found in non-small cell lung cancer (NSCLC) cell lines.</p> <p>Alias Symbols: FUS-2, FUS2</p> <p>Protein Interaction Partner: APP, EMG1,</p> <p>Protein Size: 308</p>
Molecular Weight:	34 kDa
Gene ID:	24142
NCBI Accession:	<a href="#">NM_012191</a> , <a href="#">NP_036323</a>
UniProt:	<a href="#">Q93015</a>

## Application Details

Application Notes:	Optimal working dilutions should be determined experimentally by the investigator.
Comment:	Antigen size: 308 AA
Restrictions:	For Research Use only

## Handling

Format:	Liquid
Concentration:	Lot specific
Buffer:	Liquid. Purified antibody supplied in 1x PBS buffer with 0.09 % (w/v) sodium azide and 2 % sucrose.
Preservative:	Sodium azide
Precaution of Use:	This product contains Sodium azide: a POISONOUS AND HAZARDOUS SUBSTANCE which should be handled by trained staff only.
Handling Advice:	Avoid repeated freeze-thaw cycles.
Storage:	-20 °C
Storage Comment:	For short term use, store at 2-8°C up to 1 week. For long term storage, store at -20°C in small aliquots to prevent freeze-thaw cycles.



Western Blotting

**Image 1.** WB Suggested Anti-NAT6 Antibody Titration: 0.2-1 ug/ml Positive Control: HepG2 cell lysate