

Datasheet for ABIN2783486
anti-SEPHS2 antibody (C-Term)[Go to Product page](#)

1 Image

Overview

Quantity:	100 µL
Target:	SEPHS2
Binding Specificity:	C-Term
Reactivity:	Human, Mouse, Cow, Horse, Pig, Rat, Zebrafish (Danio rerio), Dog, Guinea Pig, Rabbit
Host:	Rabbit
Clonality:	Polyclonal
Conjugate:	This SEPHS2 antibody is un-conjugated
Application:	Western Blotting (WB)

Product Details

Immunogen:	The immunogen is a synthetic peptide directed towards the C-terminal region of human SEPHS1
Sequence:	AATDITGFGI LGHSQNLAKQ QRNEVSFVIH NLPIIAKMAA VSKASGRFGL
Predicted Reactivity:	Cow: 100%, Dog: 93%, Guinea Pig: 93%, Horse: 100%, Human: 100%, Mouse: 100%, Pig: 100%, Rabbit: 93%, Rat: 100%, Zebrafish: 86%
Characteristics:	This is a rabbit polyclonal antibody against SEPHS2. It was validated on Western Blot.
Purification:	Affinity Purified

Target Details

Target:	SEPHS2
---------	--------

Target Details

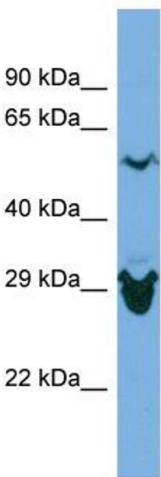
Alternative Name:	SEPHS2 (SEPHS2 Products)
Background:	<p>This gene encodes an enzyme that synthesizes selenophosphate from selenide and ATP. Selenophosphate is the selenium donor used to synthesize selenocysteine, which is co-translationally incorporated into selenoproteins at in-frame UGA codons.</p> <p>Alias Symbols: SPS, SELD, SPS1</p> <p>Protein Size: 483</p>
Molecular Weight:	53 kDa
Gene ID:	22929
NCBI Accession:	NM_001195602 , NP_001182531
UniProt:	P49903

Application Details

Application Notes:	Optimal working dilution should be determined by the investigator.
Restrictions:	For Research Use only

Handling

Format:	Liquid
Concentration:	1 mg/mL
Buffer:	Liquid. Purified antibody supplied in 1x PBS buffer with 0.09 % (w/v) sodium azide and 2 % sucrose.
Preservative:	Sodium azide
Precaution of Use:	This product contains Sodium azide: a POISONOUS AND HAZARDOUS SUBSTANCE which should be handled by trained staff only.
Handling Advice:	Avoid repeat freeze-thaw cycles.
Storage:	-20 °C
Storage Comment:	For short term use, store at 2-8°C up to 1 week. For long term storage, store at -20°C in small aliquots to prevent freeze-thaw cycles.



Western Blotting

Image 1. Host: Rabbit Target Name: SEPHS2 Sample Type: ACHN Whole Cell lysates Antibody Dilution: 1.0ug/ml