

Datasheet for ABIN2783497  
**anti-LCMT2 antibody (C-Term)**[Go to Product page](#)

## 1 Image

## Overview

Quantity:	100 µL
Target:	LCMT2
Binding Specificity:	C-Term
Reactivity:	Human, Rat, Cow, Dog, Horse, Pig
Host:	Rabbit
Clonality:	Polyclonal
Conjugate:	This LCMT2 antibody is un-conjugated
Application:	Western Blotting (WB)

## Product Details

Immunogen:	The immunogen is a synthetic peptide directed towards the C terminal region of human LCMT2
Sequence:	PVLSDWHFLH VGTMAWVRIP VEGEVPEARH SHSACTWQGG ALIAGGLGAS
Predicted Reactivity:	Cow: 86%, Dog: 86%, Horse: 86%, Human: 100%, Pig: 86%, Rat: 86%
Characteristics:	This is a rabbit polyclonal antibody against LCMT2. It was validated on Western Blot using a cell lysate as a positive control.
Purification:	Affinity Purified

## Target Details

Target:	LCMT2
Alternative Name:	LCMT2 ( <a href="#">LCMT2 Products</a> )

## Target Details

Background:	LCMT2 belongs to the highly variable methyltransferase superfamily. This gene is the inferred homolog of the <i>Saccharomyces cerevisiae</i> carboxymethyltransferase gene PPM2 that is essential for the synthesis of the hypermodified guanosine Wybutosine (yW). The protein encoded by this intronless gene belongs to the highly variable methyltransferase superfamily. This gene is the inferred homolog of the <i>Saccharomyces cerevisiae</i> carboxymethyltransferase gene PPM2 that is essential for the synthesis of the hypermodified guanosine Wybutosine (yW). Alias Symbols: KIAA0547, MGC9534, PPM2, TYW4 Protein Interaction Partner: UBC, Protein Size: 686
Molecular Weight:	75 kDa
Gene ID:	9836
NCBI Accession:	<a href="#">NM_014793</a> , <a href="#">NP_055608</a>
UniProt:	<a href="#">O60294</a>

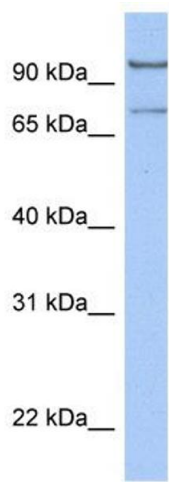
## Application Details

Application Notes:	Optimal working dilutions should be determined experimentally by the investigator.
Comment:	Antigen size: 686 AA
Restrictions:	For Research Use only

## Handling

Format:	Liquid
Concentration:	Lot specific
Buffer:	Liquid. Purified antibody supplied in 1x PBS buffer with 0.09 % (w/v) sodium azide and 2 % sucrose.
Preservative:	Sodium azide
Precaution of Use:	This product contains Sodium azide: a POISONOUS AND HAZARDOUS SUBSTANCE which should be handled by trained staff only.
Handling Advice:	Avoid repeated freeze-thaw cycles.
Storage:	-20 °C
Storage Comment:	For short term use, store at 2-8°C up to 1 week. For long term storage, store at -20°C in small

aliquots to prevent freeze-thaw cycles.



**Western Blotting**

**Image 1.** WB Suggested Anti-LCMT2 Antibody Titration: 0.2-1 ug/ml Positive Control: Hela cell lysate LCMT2 is supported by BioGPS gene expression data to be expressed in HeLa