

Datasheet for ABIN2783516  
**anti-POLR3B antibody (C-Term)**[Go to Product page](#)

1 Image

1 Publication

## Overview

Quantity:	100 µL
Target:	POLR3B
Binding Specificity:	C-Term
Reactivity:	Human, Mouse, Rat, Dog, Cow, Rabbit, Zebrafish (Danio rerio), Horse, Guinea Pig, Saccharomyces cerevisiae, Goat
Host:	Rabbit
Clonality:	Polyclonal
Conjugate:	This POLR3B antibody is un-conjugated
Application:	Western Blotting (WB)

## Product Details

Immunogen:	The immunogen is a synthetic peptide directed towards the C terminal region of human POLR3B
Sequence:	IEKVMISSNA EDAFLIKMLL RQTRRPEIGD KFSSRHGQKG VCGLIVPQED
Predicted Reactivity:	Cow: 100%, Dog: 100%, Goat: 93%, Guinea Pig: 100%, Horse: 100%, Human: 100%, Mouse: 100%, Rabbit: 100%, Rat: 100%, Yeast: 93%, Zebrafish: 100%
Characteristics:	This is a rabbit polyclonal antibody against POLR3B. It was validated on Western Blot using a cell lysate as a positive control.
Purification:	Affinity Purified

## Target Details

Target:	POLR3B
Alternative Name:	POLR3B ( <a href="#">POLR3B Products</a> )
Background:	<p>POLR3B belongs to the RNA polymerase beta chain family. DNA-dependent RNA polymerase catalyzes the transcription of DNA into RNA using the four ribonucleoside triphosphates as substrates. POLR3B is the second largest core component of RNA polymerase III which synthesizes small RNAs, such as 5S rRNA and tRNAs. It is proposed to contribute to the polymerase catalytic activity and forms the polymerase active center together with the largest subunit. Pol III is composed of mobile elements and RPC2 is part of the core element with the central large cleft and probably a clamp element that moves to open and close the cleft.</p> <p>Alias Symbols: FLJ10388, RPC2, C128, HLD8</p> <p>Protein Interaction Partner: SUMO2, UBC, POLR3H, TSR1, POLR1D, CRCP, POLR3A, POLR1C, POLR2H, POLR3D, RPAP2, RPAP1, GPN1, RAE1,</p> <p>Protein Size: 1133</p>
Molecular Weight:	128 kDa
Gene ID:	55703
NCBI Accession:	<a href="#">NM_018082</a> , <a href="#">NP_060552</a>
UniProt:	<a href="#">Q9NW08</a>

## Application Details

Application Notes:	Optimal working dilutions should be determined experimentally by the investigator.
Comment:	Antigen size: 1133 AA
Restrictions:	For Research Use only

## Handling

Format:	Liquid
Concentration:	Lot specific
Buffer:	Liquid. Purified antibody supplied in 1x PBS buffer with 0.09 % (w/v) sodium azide and 2 % sucrose.
Preservative:	Sodium azide
Precaution of Use:	This product contains Sodium azide: a POISONOUS AND HAZARDOUS SUBSTANCE which should be handled by trained staff only.

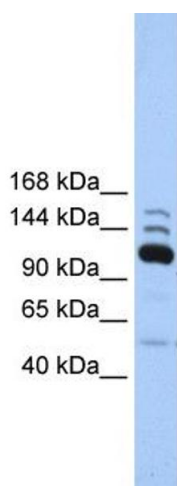
## Handling

Handling Advice:	Avoid repeated freeze-thaw cycles.
Storage:	-20 °C
Storage Comment:	For short term use, store at 2-8°C up to 1 week. For long term storage, store at -20°C in small aliquots to prevent freeze-thaw cycles.

## Publications

Product cited in:	Craxton: "Evolutionary genomics of plant genes encoding N-terminal-TM-C2 domain proteins and the similar FAM62 genes and synaptotagmin genes of metazoans." in: <b>BMC genomics</b> , Vol. 8, pp. 259, (2007) ( <a href="#">PubMed</a> ).
-------------------	---

## Images



### Western Blotting

**Image 1.** WB Suggested Anti-POLR3B Antibody Titration:  
0.2-1 ug/ml Positive Control: Human heart