

Datasheet for ABIN2783523  
**anti-METTL2B antibody (N-Term)**



[Go to Product page](#)

1 Image

## Overview

Quantity:	100 µL
Target:	METTL2B
Binding Specificity:	N-Term
Reactivity:	Human, Dog, Cow, Horse, Mouse, Pig, Rat, Guinea Pig, Rabbit, Zebrafish (Danio rerio)
Host:	Rabbit
Clonality:	Polyclonal
Conjugate:	This METTL2B antibody is un-conjugated
Application:	Western Blotting (WB)

## Product Details

Immunogen:	The immunogen is a synthetic peptide directed towards the N terminal region of human METTL2B
Sequence:	AGSYPEGAPA ILADKRQQFG SRFLSDPARV FHHNAWDNVE WSEEQAAAAE
Predicted Reactivity:	Cow: 100%, Dog: 100%, Guinea Pig: 77%, Horse: 100%, Human: 100%, Mouse: 86%, Pig: 100%, Rabbit: 93%, Rat: 86%, Zebrafish: 77%
Characteristics:	This is a rabbit polyclonal antibody against METTL2B. It was validated on Western Blot using a cell lysate as a positive control.
Purification:	Affinity Purified

## Target Details

Target:	METTL2B
---------	---------

### Target Details

Alternative Name:	METTL2B ( <a href="#">METTL2B Products</a> )
Background:	<p>METTL2B is a member of a family of methyltransferases that share homology with, but are distinct from, the UbiE family of methyltransferases. This gene is a member of a family of methyltransferases that share homology with, but are distinct from, the UbiE family of methyltransferases. Alternatively spliced variants which encode different protein isoforms have been described, however, not all variants have been fully characterized.</p> <p>Alias Symbols: FLJ11350, FLJ12760, METL, METTL2, METTL2A, PSENIP1</p> <p>Protein Interaction Partner: UBC, APP,</p> <p>Protein Size: 378</p>
Molecular Weight:	43 kDa
Gene ID:	55798
NCBI Accession:	<a href="#">NM_018396</a> , <a href="#">NP_060866</a>
UniProt:	<a href="#">Q6P1Q9</a>

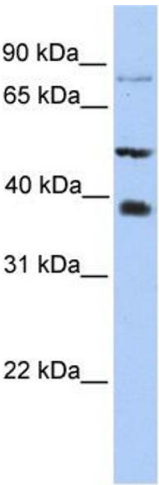
### Application Details

Application Notes:	Optimal working dilutions should be determined experimentally by the investigator.
Comment:	Antigen size: 378 AA
Restrictions:	For Research Use only

### Handling

Format:	Liquid
Concentration:	Lot specific
Buffer:	Liquid. Purified antibody supplied in 1x PBS buffer with 0.09 % (w/v) sodium azide and 2 % sucrose.
Preservative:	Sodium azide
Precaution of Use:	This product contains Sodium azide: a POISONOUS AND HAZARDOUS SUBSTANCE which should be handled by trained staff only.
Handling Advice:	Avoid repeated freeze-thaw cycles.
Storage:	-20 °C
Storage Comment:	For short term use, store at 2-8°C up to 1 week. For long term storage, store at -20°C in small

aliquots to prevent freeze-thaw cycles.



**Western Blotting**

**Image 1.** WB Suggested Anti-METTL2B Antibody Titration:  
0.2-1 ug/ml Positive Control: HepG2 cell lysate