

Datasheet for ABIN2783543
anti-GMPPB antibody (N-Term)



[Go to Product page](#)

1 Image

Overview

Quantity:	100 µL
Target:	GMPPB
Binding Specificity:	N-Term
Reactivity:	Human, Mouse, Rat, Rabbit, Zebrafish (Danio rerio), Cow, Dog, Guinea Pig, Goat, Saccharomyces cerevisiae
Host:	Rabbit
Clonality:	Polyclonal
Conjugate:	This GMPPB antibody is un-conjugated
Application:	Western Blotting (WB)

Product Details

Sequence:	KALILVGGYG TRLRPLTLST PKPLVDFCNK PILLHQVEAL AAAGVDHVIL
Predicted Reactivity:	Cow: 93%, Dog: 93%, Goat: 86%, Guinea Pig: 93%, Human: 100%, Mouse: 100%, Rabbit: 100%, Rat: 100%, Yeast: 93%, Zebrafish: 86%
Characteristics:	This is a rabbit polyclonal antibody against Gmppb. It was validated on Western Blot.
Purification:	Affinity Purified

Target Details

Target:	GMPPB
Alternative Name:	Gmppb (GMPPB Products)

Target Details

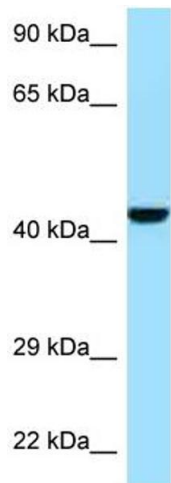
Background:	The function of this protein remains unknown. Alias Symbols: AI317178, E430010H19 Protein Size: 360
Molecular Weight:	40 kDa
Gene ID:	331026
NCBI Accession:	NM_177910 , NP_808578
UniProt:	Q8BTZ7

Application Details

Application Notes:	Optimal working dilutions should be determined experimentally by the investigator.
Comment:	Antigen size: 360 AA
Restrictions:	For Research Use only

Handling

Format:	Liquid
Concentration:	Lot specific
Buffer:	Liquid. Purified antibody supplied in 1x PBS buffer with 0.09 % (w/v) sodium azide and 2 % sucrose.
Preservative:	Sodium azide
Precaution of Use:	This product contains Sodium azide: a POISONOUS AND HAZARDOUS SUBSTANCE which should be handled by trained staff only.
Handling Advice:	Avoid repeated freeze-thaw cycles.
Storage:	-20 °C
Storage Comment:	For short term use, store at 2-8°C up to 1 week. For long term storage, store at -20°C in small aliquots to prevent freeze-thaw cycles.



Western Blotting

Image 1. WB Suggested Anti-Gmppb Antibody Titration:
1.0 ug/ml Positive Control: Mouse Pancreas