

Datasheet for ABIN2783544
anti-GMPPB antibody (C-Term)[Go to Product page](#)

3 Images

Overview

Quantity:	100 µL
Target:	GMPPB
Binding Specificity:	C-Term
Reactivity:	Human, Mouse, Rat, Rabbit, Zebrafish (Danio rerio), Cow, Dog, Guinea Pig, Horse
Host:	Rabbit
Clonality:	Polyclonal
Conjugate:	This GMPPB antibody is un-conjugated
Application:	Western Blotting (WB), Immunohistochemistry (IHC)

Product Details

Immunogen:	The immunogen is a synthetic peptide directed towards the C terminal region of human GMPPB
Sequence:	RCRVGQWVRM ENVTVLGEDV IVNDELYLNG ASVLPHKSIG ESVPEPRIIM
Predicted Reactivity:	Cow: 100%, Dog: 100%, Guinea Pig: 100%, Horse: 100%, Human: 100%, Mouse: 100%, Rabbit: 100%, Rat: 100%, Zebrafish: 86%
Characteristics:	This is a rabbit polyclonal antibody against GMPPB. It was validated on Western Blot and immunohistochemistry.
Purification:	Protein A purified

Target Details

Target:	GMPPB
---------	-------

Target Details

Alternative Name:	GMPPB (GMPPB Products)
Background:	<p>GMPPB is a GDP-mannose pyrophosphorylase. This enzyme catalyzes the reaction which converts mannose-1-phosphate and GTP to GDP-mannose which is involved in the production of N-linked oligosaccharides. This gene is thought to encode a GDP-mannose pyrophosphorylase. This enzyme catalyzes the reaction which converts mannose-1-phosphate and GTP to GDP-mannose which is involved in the production of N-linked oligosaccharides. The gene encodes two transcript variants.</p> <p>Alias Symbols: KIAA1851</p> <p>Protein Interaction Partner: TXNDC5, GMPPA, ATP6V1H, RANBP6, RBM12, CSDE1, PDE3A, LMNA, JUP, ATP6V1B2, DIABLO, USP47, UBC, GMPPB,</p> <p>Protein Size: 387</p>
Molecular Weight:	43 kDa
Gene ID:	29925
NCBI Accession:	NM_013334 , NP_037466

Application Details

Application Notes:	Optimal working dilutions should be determined experimentally by the investigator.
Comment:	Antigen size: 387 AA
Restrictions:	For Research Use only

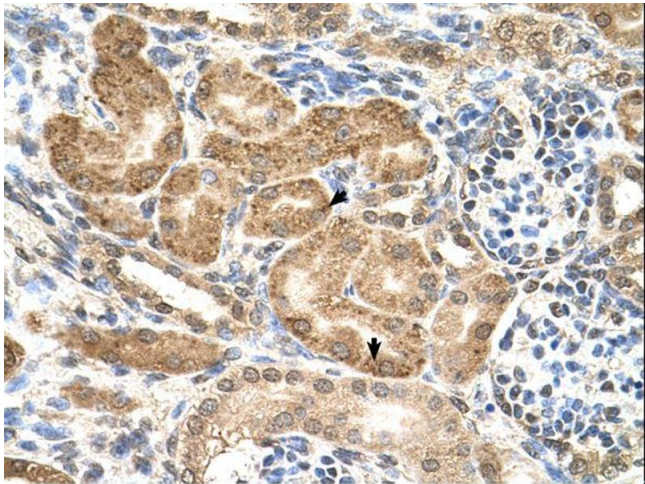
Handling

Format:	Liquid
Concentration:	Lot specific
Buffer:	Liquid. Purified antibody supplied in 1x PBS buffer with 0.09 % (w/v) sodium azide and 2 % sucrose.
Preservative:	Sodium azide
Precaution of Use:	This product contains Sodium azide: a POISONOUS AND HAZARDOUS SUBSTANCE which should be handled by trained staff only.
Handling Advice:	Avoid repeated freeze-thaw cycles.
Storage:	-20 °C

Handling

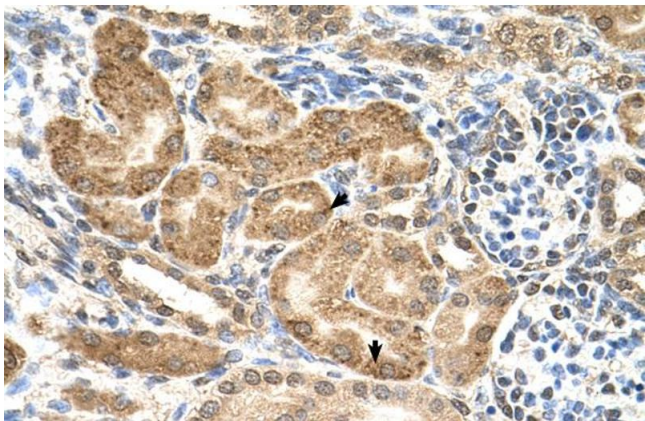
Storage Comment: For short term use, store at 2-8°C up to 1 week. For long term storage, store at -20°C in small aliquots to prevent freeze-thaw cycles.

Images



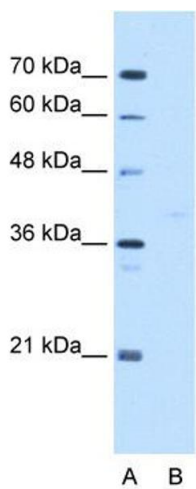
Immunohistochemistry

Image 1.



Immunohistochemistry

Image 2. Human kidney



Western Blotting

Image 3. WB Suggested Anti-GMPPB Antibody Titration:
5.0ug/ml Positive Control: HepG2 cell lysate