

Datasheet for ABIN2783551  
**anti-PGS1 antibody (C-Term)**[Go to Product page](#)

## 2 Images

## Overview

Quantity:	100 µL
Target:	PGS1
Binding Specificity:	C-Term
Reactivity:	Human, Mouse, Rat, Cow, Guinea Pig, Dog, Horse
Host:	Rabbit
Clonality:	Polyclonal
Conjugate:	This PGS1 antibody is un-conjugated
Application:	Western Blotting (WB), Immunohistochemistry (IHC)

## Product Details

Immunogen:	The immunogen is a synthetic peptide directed towards the C terminal region of human PGS1
Sequence:	QIAIVTENQA LQQQLHQEQE QLYLRSGVVS SATFEQPSRQ VKLWVKMVTP
Predicted Reactivity:	Cow: 100%, Dog: 93%, Guinea Pig: 100%, Horse: 93%, Human: 100%, Mouse: 86%, Rat: 93%
Characteristics:	This is a rabbit polyclonal antibody against PGS1. It was validated on Western Blot and immunohistochemistry.
Purification:	Affinity Purified

## Target Details

Target:	PGS1
Alternative Name:	PGS1 ( <a href="#">PGS1 Products</a> )

## Target Details

Background:	PGS1 functions in the biosynthesis of the anionic phospholipids phosphatidylglycerol and cardiolipin. Alias Symbols: DKFZP762M186, MGC131960 Protein Interaction Partner: UBC, PDLIM1, GABARAP, Protein Size: 556
Molecular Weight:	63 kDa
Gene ID:	9489
NCBI Accession:	<a href="#">NM_024419</a> , <a href="#">NP_077733</a>
UniProt:	<a href="#">Q32NB8</a>

## Application Details

Application Notes:	Optimal working dilutions should be determined experimentally by the investigator.
Comment:	Antigen size: 556 AA
Restrictions:	For Research Use only

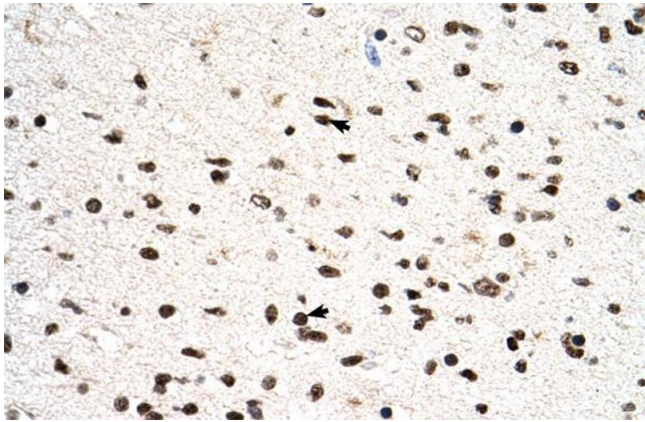
## Handling

Format:	Liquid
Concentration:	Lot specific
Buffer:	Liquid. Purified antibody supplied in 1x PBS buffer with 0.09 % (w/v) sodium azide and 2 % sucrose.
Preservative:	Sodium azide
Precaution of Use:	This product contains Sodium azide: a POISONOUS AND HAZARDOUS SUBSTANCE which should be handled by trained staff only.
Handling Advice:	Avoid repeated freeze-thaw cycles.
Storage:	-20 °C
Storage Comment:	For short term use, store at 2-8°C up to 1 week. For long term storage, store at -20°C in small aliquots to prevent freeze-thaw cycles.



#### Western Blotting

**Image 1.** WB Suggested Anti-PGS1 Antibody Titration: 0.2-1 ug/ml Positive Control: Jurkat cell lysate



#### Immunohistochemistry

**Image 2.** Human Brain