

Datasheet for ABIN2783552  
**anti-NARG1L antibody (Middle Region)**[Go to Product page](#)

## 3 Images

## Overview

Quantity:	100 µL
Target:	NARG1L (NAA16)
Binding Specificity:	Middle Region
Reactivity:	Human, Mouse, Rat, Rabbit, Cow, Dog, Pig, Horse
Host:	Rabbit
Clonality:	Polyclonal
Conjugate:	This NARG1L antibody is un-conjugated
Application:	Western Blotting (WB), Immunohistochemistry (IHC)

## Product Details

Immunogen:	The immunogen is a synthetic peptide directed towards the middle region of human NARG1L
Sequence:	ASLKTCDFFS PYENGEKEPP TTLLWVQYFL AQHFDKLGQY SLALDYINAA
Predicted Reactivity:	Cow: 100%, Dog: 100%, Horse: 93%, Human: 100%, Mouse: 100%, Pig: 93%, Rabbit: 100%, Rat: 100%
Characteristics:	This is a rabbit polyclonal antibody against NARG1L. It was validated on Western Blot and immunohistochemistry.
Purification:	Affinity Purified

## Target Details

Target:	NARG1L (NAA16)
---------	----------------

## Target Details

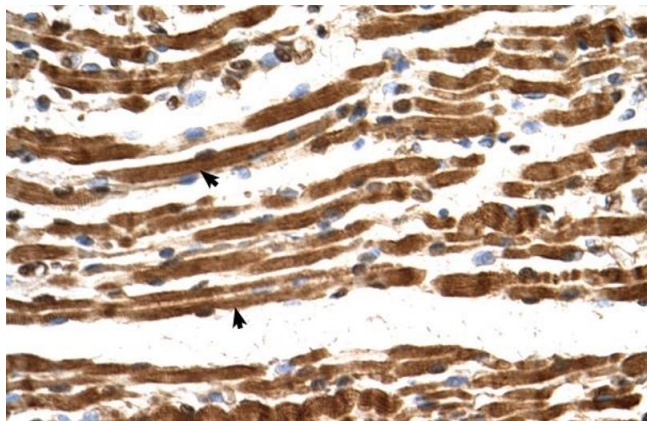
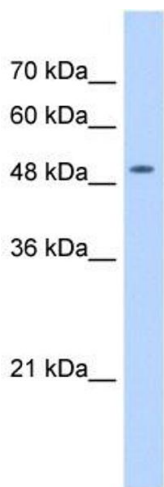
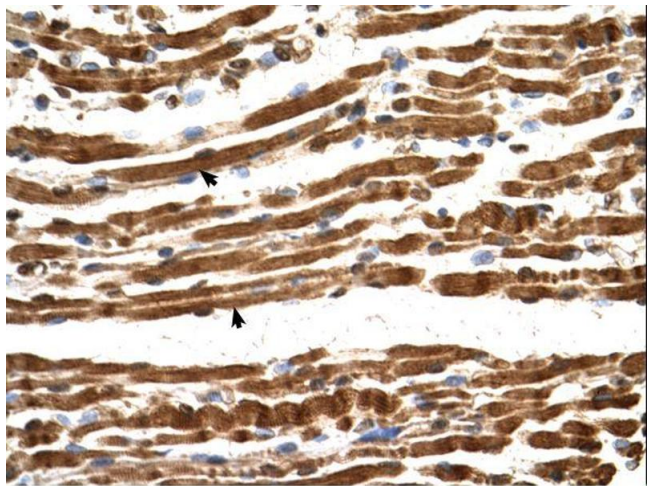
Alternative Name:	NARG1L ( <a href="#">NAA16 Products</a> )
Background:	<p>NARG1L may belong to a complex displaying N-terminal acetyltransferase activity.</p> <p>Alias Symbols: MGC40612, RP11-396A22.1, NARG1L</p> <p>Protein Interaction Partner: UBC, CDCA5, MINA, HYPK, NAA10, TCEA1, PLCB3, CEBPA, SMURF1,</p> <p>Protein Size: 429</p>
Molecular Weight:	50 kDa
Gene ID:	79612
NCBI Accession:	<a href="#">NM_001110798</a> , <a href="#">NP_001104268</a>
UniProt:	<a href="#">B0QZ59</a>

## Application Details

Application Notes:	Optimal working dilutions should be determined experimentally by the investigator.
Comment:	Antigen size: 429 AA
Restrictions:	For Research Use only

## Handling

Format:	Liquid
Concentration:	Lot specific
Buffer:	Liquid. Purified antibody supplied in 1x PBS buffer with 0.09 % (w/v) sodium azide and 2 % sucrose.
Preservative:	Sodium azide
Precaution of Use:	This product contains Sodium azide: a POISONOUS AND HAZARDOUS SUBSTANCE which should be handled by trained staff only.
Handling Advice:	Avoid repeated freeze-thaw cycles.
Storage:	-20 °C
Storage Comment:	For short term use, store at 2-8°C up to 1 week. For long term storage, store at -20°C in small aliquots to prevent freeze-thaw cycles.



### Immunohistochemistry

**Image 1.**

### Western Blotting

**Image 2.** WB Suggested Anti-NARG1L Antibody Titration: 1 ug/ml Positive Control: HepG2 cell lysate NAA16 is supported by BioGPS gene expression data to be expressed in HepG2

### Immunohistochemistry

**Image 3.** Human Muscle