

Datasheet for ABIN2783558  
**anti-SUV39H2 antibody (Middle Region)**



[Go to Product page](#)

2 Images

### Overview

Quantity:	100 µL
Target:	SUV39H2
Binding Specificity:	Middle Region
Reactivity:	Human, Mouse, Rat, Cow, Dog, Horse, Guinea Pig, Rabbit
Host:	Rabbit
Clonality:	Polyclonal
Conjugate:	This SUV39H2 antibody is un-conjugated
Application:	Western Blotting (WB)

### Product Details

Immunogen:	The immunogen is a synthetic peptide directed towards the middle region of human SUV39H2
Sequence:	LDTRLPRIAL FSTR TINAGE ELTFDYQMKG SGDISSDSID HSPAKKRVRT
Predicted Reactivity:	Cow: 93%, Dog: 93%, Guinea Pig: 100%, Horse: 100%, Human: 100%, Mouse: 100%, Rabbit: 100%, Rat: 86%
Characteristics:	This is a rabbit polyclonal antibody against SUV39H2. It was validated on Western Blot using a cell lysate as a positive control.
Purification:	Affinity Purified

### Target Details

Target:	SUV39H2
---------	---------

## Target Details

---

Alternative Name:	SUV39H2 ( <a href="#">SUV39H2 Products</a> )
Background:	<p>The function of this protein remains unknown.</p> <p>Alias Symbols: FLJ23414, KMT1B</p> <p>Protein Interaction Partner: APPL2, CBX5, PNMA1, CCDC37, C8orf74, LCA5L, ZNF57, RAB3IP, MTF2, SNF8, RASSF1, MYL12A, POLR3F, AKAP9, BLZF1, ZNF212, NME4, ID2, CCDC151, MRFAP1, LNX1, CEP70, GSTCD, KCTD17, ZNF557, WIZ, CDCA4, KLHDC4, KLF3, PHF19, FAM20C, LRIF1, MCM3AP, SHC1, CBX7, SMAD5,</p> <p>Protein Size: 350</p>
Molecular Weight:	40 kDa
Gene ID:	79723
NCBI Accession:	<a href="#">NM_024670</a> , <a href="#">NP_078946</a>
UniProt:	<a href="#">D3DRT4</a>

## Application Details

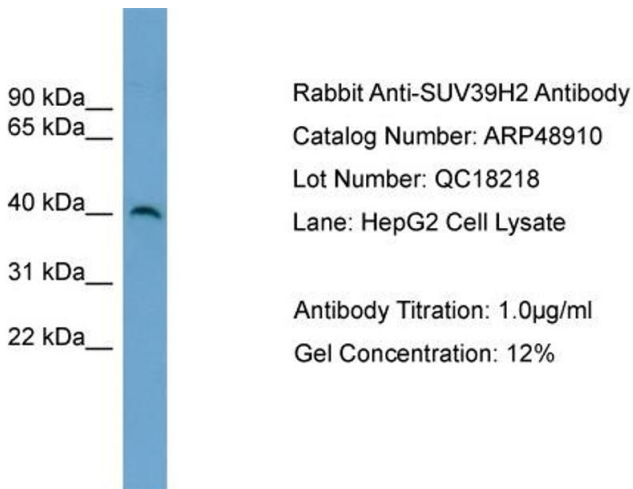
---

Application Notes:	Optimal working dilutions should be determined experimentally by the investigator.
Comment:	Antigen size: 350 AA
Restrictions:	For Research Use only

## Handling

---

Format:	Liquid
Concentration:	Lot specific
Buffer:	Liquid. Purified antibody supplied in 1x PBS buffer with 0.09 % (w/v) sodium azide and 2 % sucrose.
Preservative:	Sodium azide
Precaution of Use:	This product contains Sodium azide: a POISONOUS AND HAZARDOUS SUBSTANCE which should be handled by trained staff only.
Handling Advice:	Avoid repeated freeze-thaw cycles.
Storage:	-20 °C
Storage Comment:	For short term use, store at 2-8°C up to 1 week. For long term storage, store at -20°C in small aliquots to prevent freeze-thaw cycles.

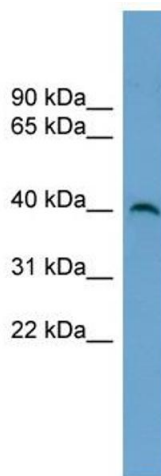


#### Western Blotting

##### Image 1. WB Suggested Anti-SUV39H2

Antibody Titration: 0.2-1 µg/mL ELISA Titer: 1:12500

Positive Control: HepG2 cell lysate



#### Western Blotting

##### Image 2. WB Suggested Anti-SUV39H2 Antibody Titration:

0.2-1 ug/ml ELISA Titer: 1:312500 Positive Control: HepG2

cell lysate