

Datasheet for ABIN2783559  
**anti-ECHDC3 antibody (N-Term)**[Go to Product page](#)

## 1 Image

## Overview

Quantity:	100 µL
Target:	ECHDC3
Binding Specificity:	N-Term
Reactivity:	Human, Mouse, Rat, Cow, Dog, Guinea Pig, Rabbit, Saccharomyces cerevisiae, Zebrafish (Danio rerio)
Host:	Rabbit
Clonality:	Polyclonal
Conjugate:	This ECHDC3 antibody is un-conjugated
Application:	Western Blotting (WB)

## Product Details

Immunogen:	The immunogen is a synthetic peptide directed towards the N terminal region of human ECHDC3
Sequence:	SLAMLKSLQS DILHDADSND LKVIISAEG PVFSSGHDLK ELTEEQGRDY
Predicted Reactivity:	Cow: 100%, Dog: 100%, Guinea Pig: 100%, Human: 100%, Mouse: 100%, Rabbit: 100%, Rat: 100%, Yeast: 100%, Zebrafish: 92%
Characteristics:	This is a rabbit polyclonal antibody against ECHDC3. It was validated on Western Blot using a cell lysate as a positive control.
Purification:	Protein A purified

## Target Details

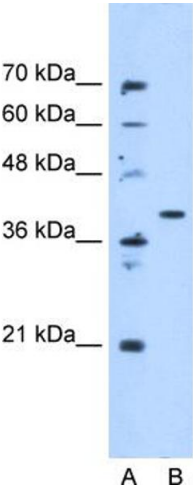
Target:	ECHDC3
Alternative Name:	ECHDC3 ( <a href="#">ECHDC3 Products</a> )
Background:	The function remains unknown. Alias Symbols: RP11-401F24.3, FLJ20909 Protein Size: 356
Molecular Weight:	40 kDa
Gene ID:	79746
NCBI Accession:	<a href="#">NM_024693</a>
UniProt:	<a href="#">Q96DC8</a>

## Application Details

Application Notes:	Optimal working dilutions should be determined experimentally by the investigator.
Comment:	Antigen size: 356 AA
Restrictions:	For Research Use only

## Handling

Format:	Liquid
Concentration:	Lot specific
Buffer:	Liquid. Purified antibody supplied in 1x PBS buffer with 0.09 % (w/v) sodium azide and 2 % sucrose.
Preservative:	Sodium azide
Precaution of Use:	This product contains Sodium azide: a POISONOUS AND HAZARDOUS SUBSTANCE which should be handled by trained staff only.
Handling Advice:	Avoid repeated freeze-thaw cycles.
Storage:	-20 °C
Storage Comment:	For short term use, store at 2-8°C up to 1 week. For long term storage, store at -20°C in small aliquots to prevent freeze-thaw cycles.



Western Blotting

**Image 1.** WB Suggested Anti-ECHDC3 Antibody Titration:  
5.0ug/ml Positive Control: HepG2 cell lysate