

Datasheet for ABIN2783568
anti-NAA50 antibody (C-Term)[Go to Product page](#)

2 Images

Overview

| | |
|----------------------|---|
| Quantity: | 100 µL |
| Target: | NAA50 |
| Binding Specificity: | C-Term |
| Reactivity: | Human, Mouse, Rat, Cow, Dog, Horse, Pig, Rabbit, Guinea Pig |
| Host: | Rabbit |
| Clonality: | Polyclonal |
| Conjugate: | This NAA50 antibody is un-conjugated |
| Application: | Western Blotting (WB) |

Product Details

| | |
|-----------------------|---|
| Immunogen: | The immunogen is a synthetic peptide directed towards the C terminal region of human NAT13 |
| Sequence: | AIDFYRKFGF EIIETKKNNYY KRIEPADAHV LQKNLKVPSG QNADVQKTDN |
| Predicted Reactivity: | Cow: 100%, Dog: 100%, Guinea Pig: 93%, Horse: 100%, Human: 100%, Mouse: 86%, Pig: 100%, Rabbit: 100%, Rat: 93% |
| Characteristics: | This is a rabbit polyclonal antibody against NAT13. It was validated on Western Blot using a cell lysate as a positive control. |
| Purification: | Protein A purified |

Target Details

| | |
|---------|-------|
| Target: | NAA50 |
|---------|-------|

Target Details

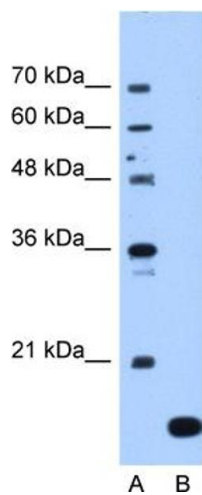
| | |
|-------------------|--|
| Alternative Name: | NAT13 (NAA50 Products) |
| Background: | <p>NAT13 is a probable catalytic component of the ARD1A-NARG1 complex which displays alpha (N-terminal) acetyltransferase activity.</p> <p>Alias Symbols: FLJ13194, MAK3, NAT5, SAN, hNAT5, hSAN, NAT13</p> <p>Protein Interaction Partner: JMJD6, BHLHE40, UBC, NAA15, NAA10, Naa50,</p> <p>Protein Size: 169</p> |
| Molecular Weight: | 19 kDa |
| Gene ID: | 80218 |
| NCBI Accession: | NM_025146 , NP_079422 |
| UniProt: | Q9GZZ1 |

Application Details

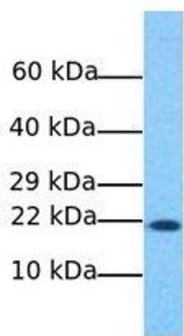
| | |
|--------------------|--|
| Application Notes: | Optimal working dilutions should be determined experimentally by the investigator. |
| Comment: | Antigen size: 169 AA |
| Restrictions: | For Research Use only |

Handling

| | |
|--------------------|---|
| Format: | Liquid |
| Concentration: | Lot specific |
| Buffer: | Liquid. Purified antibody supplied in 1x PBS buffer with 0.09 % (w/v) sodium azide and 2 % sucrose. |
| Preservative: | Sodium azide |
| Precaution of Use: | This product contains Sodium azide: a POISONOUS AND HAZARDOUS SUBSTANCE which should be handled by trained staff only. |
| Handling Advice: | Avoid repeated freeze-thaw cycles. |
| Storage: | -20 °C |
| Storage Comment: | For short term use, store at 2-8°C up to 1 week. For long term storage, store at -20°C in small aliquots to prevent freeze-thaw cycles. |



NAT13



Western Blotting

Image 1. WB Suggested Anti-NAT13 Antibody Titration: 1.25ug/ml Positive Control: Jurkat cell lysate NAA50 is supported by BioGPS gene expression data to be expressed in Jurkat

Western Blotting

Image 2. Host: Rabbit Target Name: NAT13 Sample Tissue: Human MCF7 Antibody Dilution: 1.0ug/ml