



[Go to Product page](#)

Datasheet for ABIN2783571
anti-SETD7 antibody (C-Term)

1 Image

1 Publication

Overview

Quantity:	100 µL
Target:	SETD7
Binding Specificity:	C-Term
Reactivity:	Human, Mouse, Rat, Dog, Horse, Rabbit, Cow, Pig, Zebrafish (Danio rerio), Guinea Pig
Host:	Rabbit
Clonality:	Polyclonal
Conjugate:	This SETD7 antibody is un-conjugated
Application:	Western Blotting (WB)

Product Details

Immunogen:	The immunogen is a synthetic peptide directed towards the C terminal region of human SETD7
Sequence:	PRFGPIKCIR TLRAVEADEE LTVAYGYDHS PPGKSGPEAP EWYQVELKAF
Predicted Reactivity:	Cow: 100%, Dog: 100%, Guinea Pig: 93%, Horse: 100%, Human: 100%, Mouse: 100%, Pig: 100%, Rabbit: 100%, Rat: 100%, Zebrafish: 86%
Characteristics:	This is a rabbit polyclonal antibody against SETD7. It was validated on Western Blot using a cell lysate as a positive control.
Purification:	Protein A purified

Target Details

Target:	SETD7
---------	-------

Target Details

Alternative Name: SETD7 ([SETD7 Products](#))

Background: SETD7 is a histone methyltransferase that specifically monomethylates 'Lys-4' of histone H3. H3 'Lys-4' methylation represents a specific tag for epigenetic transcriptional activation. It plays a central role in the transcriptional activation of genes such as collagenase or insulin. It is recruited by IPF1/PDX-1 to the insulin promoter, leading to activate transcription. It has also methyltransferase activity toward non-histone proteins such as p53/TP53, TAF10, and possibly TAF7 by recognizing and binding the [KR]-[STA]-K in substrate proteins.

Alias Symbols: FLJ21193, KIAA1717, KMT7, SET7, SET7/9, SET9

Protein Interaction Partner: KLF4, HIST3H3, SOX2, PRKAR1A, A1BG, TP53, NR2F2, STEAP3, SERTAD1, DPY30, MED1, MYOD1, E2F1, HIST1H3A, SMARCA4, H3F3A, STAT3, RELA, AR, UBC, DNMT1, PPP1R12A, SIRT1, TBP, TAF10, TAF7, TAF6, HIST1H4A, ESR1, HIST2H3C, HCFC1, L3MBTL1,

Protein Size: 366

Molecular Weight: 41 kDa

Gene ID: 80854

NCBI Accession: [NM_030648](#), [NP_085151](#)

UniProt: [Q8WTS6](#)

Application Details

Application Notes: Optimal working dilutions should be determined experimentally by the investigator.

Comment: Antigen size: 366 AA

Restrictions: For Research Use only

Handling

Format: Liquid

Concentration: Lot specific

Buffer: Liquid. Purified antibody supplied in 1x PBS buffer with 0.09 % (w/v) sodium azide and 2 % sucrose.

Preservative: Sodium azide

Precaution of Use: This product contains Sodium azide: a POISONOUS AND HAZARDOUS SUBSTANCE which should be handled by trained staff only.

Handling

Handling Advice: Avoid repeated freeze-thaw cycles.

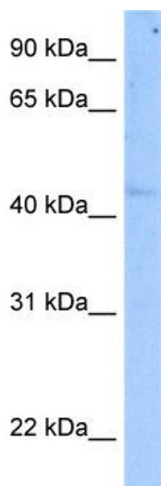
Storage: -20 °C

Storage Comment: For short term use, store at 2-8°C up to 1 week. For long term storage, store at -20°C in small aliquots to prevent freeze-thaw cycles.

Publications

Product cited in: Clayton, Daley, MacDonald, Fernandez-Vizarra, Bottegoni, O'Neil, Major, Griffin, Zhuang, Adewoye, Woolcock, Jones, Goodyear, Elmesmari, Filer, Tennant, Alivernini, Buckley, Pitceathly et al.: "Inflammation causes remodeling of mitochondrial cytochrome c oxidase mediated by the bifunctional gene C15orf48. ..." in: **Science advances**, Vol. 7, Issue 50, pp. eabl5182, (2021) ([PubMed](#)).

Images



Western Blotting

Image 1. WB Suggested Anti-SETD7 Antibody Titration:
5.0ug/ml Positive Control: Human Pancreas