



[Go to Product page](#)

Datasheet for ABIN2783577

anti-AGXT2L1 antibody (Middle Region)

1 Image

Overview

Quantity:	100 µL
Target:	AGXT2L1
Binding Specificity:	Middle Region
Reactivity:	Human, Mouse, Cow, Dog, Guinea Pig, Horse, Rabbit, Rat, Zebrafish (Danio rerio)
Host:	Rabbit
Clonality:	Polyclonal
Conjugate:	This AGXT2L1 antibody is un-conjugated
Application:	Western Blotting (WB)

Product Details

Immunogen:	The immunogen is a synthetic peptide directed towards the middle region of human AGXT2L1
Sequence:	KRVLLSADGP HRNVLKIKPP MCFTEEDAKF MVDQLDRILT VLEEAMGTKT
Predicted Reactivity:	Cow: 100%, Dog: 100%, Guinea Pig: 100%, Horse: 100%, Human: 100%, Mouse: 100%, Rabbit: 100%, Rat: 100%, Zebrafish: 93%
Characteristics:	This is a rabbit polyclonal antibody against AGXT2L1. It was validated on Western Blot using a cell lysate as a positive control.
Purification:	Affinity Purified

Target Details

Target:	AGXT2L1
---------	---------

Target Details

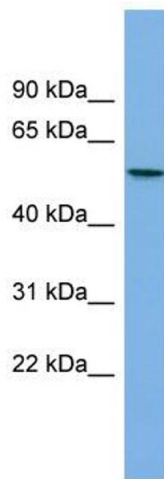
Alternative Name:	AGXT2L1 (AGXT2L1 Products)
Background:	The function of this protein remains unknown. Alias Symbols: AGXT2L1, Protein Interaction Partner: APP, UBC, Protein Size: 499
Molecular Weight:	56 kDa
Gene ID:	64850
NCBI Accession:	NM_031279 , NP_112569
UniProt:	Q8TBG4

Application Details

Application Notes:	Optimal working dilutions should be determined experimentally by the investigator.
Comment:	Antigen size: 499 AA
Restrictions:	For Research Use only

Handling

Format:	Liquid
Concentration:	Lot specific
Buffer:	Liquid. Purified antibody supplied in 1x PBS buffer with 0.09 % (w/v) sodium azide and 2 % sucrose.
Preservative:	Sodium azide
Precaution of Use:	This product contains Sodium azide: a POISONOUS AND HAZARDOUS SUBSTANCE which should be handled by trained staff only.
Handling Advice:	Avoid repeated freeze-thaw cycles.
Storage:	-20 °C
Storage Comment:	For short term use, store at 2-8°C up to 1 week. For long term storage, store at -20°C in small aliquots to prevent freeze-thaw cycles.



Western Blotting

Image 1. WB Suggested Anti-AGXT2L1 Antibody Titration:
0.2-1 ug/ml Positive Control: PANC1 cell lysate