



[Go to Product page](#)

Datasheet for ABIN2783590  
**anti-PWWP2A antibody (C-Term)**

1 Image

Overview

Quantity:	100 µL
Target:	PWWP2A
Binding Specificity:	C-Term
Reactivity:	Human, Rat, Mouse, Dog, Guinea Pig, Rabbit, Horse
Host:	Rabbit
Clonality:	Polyclonal
Conjugate:	This PWWP2A antibody is un-conjugated
Application:	Western Blotting (WB)

Product Details

Immunogen:	The immunogen is a synthetic peptide directed towards the C terminal region of human PWWP2A
Sequence:	PQSRCTSTRS AGLNKWQLLH QTVTSPAAPL QCLTDHCGFR LGALKLTVKR
Predicted Reactivity:	Dog: 100%, Guinea Pig: 100%, Horse: 93%, Human: 100%, Mouse: 100%, Rabbit: 100%, Rat: 100%
Characteristics:	This is a rabbit polyclonal antibody against PWWP2A. It was validated on Western Blot using a cell lysate as a positive control.
Purification:	Affinity Purified

Target Details

Target:	PWWP2A
---------	--------

## Target Details

---

Alternative Name:	PWWP2A ( <a href="#">PWWP2A Products</a> )
Background:	PWWP2A contains 1 PWWP domain. The exact function of PWWP2A remains unknown. Alias Symbols: KIAA1935, MGC132770, MST101 Protein Interaction Partner: HDAC1, Protein Size: 560
Molecular Weight:	61 kDa
Gene ID:	114825
NCBI Accession:	<a href="#">NM_052927</a> , <a href="#">NP_443159</a>
UniProt:	<a href="#">Q96N64</a>

## Application Details

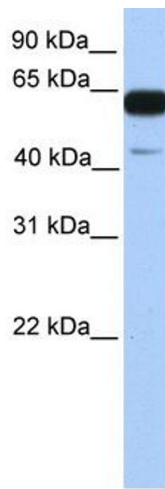
---

Application Notes:	Optimal working dilutions should be determined experimentally by the investigator.
Comment:	Antigen size: 560 AA
Restrictions:	For Research Use only

## Handling

---

Format:	Liquid
Concentration:	Lot specific
Buffer:	Liquid. Purified antibody supplied in 1x PBS buffer with 0.09 % (w/v) sodium azide and 2 % sucrose.
Preservative:	Sodium azide
Precaution of Use:	This product contains Sodium azide: a POISONOUS AND HAZARDOUS SUBSTANCE which should be handled by trained staff only.
Handling Advice:	Avoid repeated freeze-thaw cycles.
Storage:	-20 °C
Storage Comment:	For short term use, store at 2-8°C up to 1 week. For long term storage, store at -20°C in small aliquots to prevent freeze-thaw cycles.



### Western Blotting

**Image 1.** WB Suggested Anti-PWWP2A Antibody Titration:  
0.2-1 ug/ml Positive Control: Human brain