



[Go to Product page](#)

Datasheet for ABIN2783607

## anti-GLYATL2 antibody (Middle Region)

1 Image

1 Publication

### Overview

Quantity:	100 µL
Target:	GLYATL2
Binding Specificity:	Middle Region
Reactivity:	Human
Host:	Rabbit
Clonality:	Polyclonal
Conjugate:	This GLYATL2 antibody is un-conjugated
Application:	Western Blotting (WB)

### Product Details

Immunogen:	The immunogen is a synthetic peptide directed towards the middle region of human GLYATL2
Sequence:	LDEAIRKVAT SKSVQVDYMK TILFIPELPK KHKTSSNDKM ELFEVDDDNK
Predicted Reactivity:	Human: 100%
Characteristics:	This is a rabbit polyclonal antibody against GLYATL2. It was validated on Western Blot using a cell lysate as a positive control.
Purification:	Affinity Purified

### Target Details

Target:	GLYATL2
Alternative Name:	GLYATL2 ( <a href="#">GLYATL2 Products</a> )

## Target Details

---

Background:	GLYATL2 belongs to the glycine N-acyltransferase family. GLYATL2 is a mitochondrial acyltransferase which transfers the acyl group to the N-terminus of glycine. It can conjugate a multitude of substrates to form a variety of N-acylglycines. Alias Symbols: BXMAS2-10, GATF-B, MGC24009 Protein Size: 294
Molecular Weight:	34 kDa
Gene ID:	219970
NCBI Accession:	<a href="#">NM_145016</a> , <a href="#">NP_659453</a>
UniProt:	<a href="#">Q8WU03</a>

## Application Details

---

Application Notes:	Optimal working dilutions should be determined experimentally by the investigator.
Comment:	Antigen size: 294 AA
Restrictions:	For Research Use only

## Handling

---

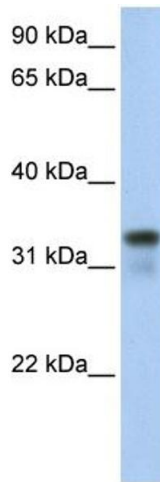
Format:	Liquid
Concentration:	Lot specific
Buffer:	Liquid. Purified antibody supplied in 1x PBS buffer with 0.09 % (w/v) sodium azide and 2 % sucrose.
Preservative:	Sodium azide
Precaution of Use:	This product contains Sodium azide: a POISONOUS AND HAZARDOUS SUBSTANCE which should be handled by trained staff only.
Handling Advice:	Avoid repeated freeze-thaw cycles.
Storage:	-20 °C
Storage Comment:	For short term use, store at 2-8°C up to 1 week. For long term storage, store at -20°C in small aliquots to prevent freeze-thaw cycles.

## Publications

---

Product cited in:	Gerhard, Wagner, Feingold, Shenmen, Grouse, Schuler, Klein, Old, Rasooly, Good, Guyer, Peck,
-------------------	--

Derge, Lipman, Collins, Jang, Sherry, Feolo, Misquitta, Lee, Rotmistrovsky, Greenhut, Schaefer, Buetow et al.: "The status, quality, and expansion of the NIH full-length cDNA project: the Mammalian Gene Collection (MGC). ..." in: **Genome research**, Vol. 14, Issue 10B, pp. 2121-7, (2004) ([PubMed](#)).



### Western Blotting

**Image 1.** WB Suggested Anti-GLYATL2 Antibody Titration:  
0.2-1 ug/ml Positive Control: 721\_B cell lysate