

Datasheet for ABIN2783612  
**anti-MAP4K4 antibody (N-Term)**

## 3 Images

[Go to Product page](#)

## Overview

Quantity:	100 µL
Target:	MAP4K4
Binding Specificity:	N-Term
Reactivity:	Human, Mouse, Rat, Horse, Rabbit, Dog, Guinea Pig, Cow, Zebrafish (Danio rerio)
Host:	Rabbit
Clonality:	Polyclonal
Conjugate:	This MAP4K4 antibody is un-conjugated
Application:	Western Blotting (WB), Immunohistochemistry (IHC)

## Product Details

Immunogen:	The immunogen is a synthetic peptide directed towards the N terminal region of human MAP4K4
Sequence:	PFIRDQPNER QVRIQLKDHI DRTRKKRGEK DETEYEYSGS EEEEEEVPEQ
Predicted Reactivity:	Cow: 100%, Dog: 100%, Guinea Pig: 100%, Horse: 100%, Human: 100%, Mouse: 100%, Rabbit: 100%, Rat: 100%, Zebrafish: 100%
Characteristics:	This is a rabbit polyclonal antibody against MAP4K4. It was validated on Western Blot using a cell lysate as a positive control.
Purification:	Affinity Purified

## Target Details

Target:	MAP4K4
---------	--------

## Target Details

Alternative Name:	MAP4K4 ( <a href="#">MAP4K4 Products</a> )
Background:	<p>MAP4K4 is the serine/threonine kinase that may play a role in the response to environmental stress and cytokines such as TNF-alpha. MAP4K4 appears to act upstream of the JUN N-terminal pathway. The protein encoded by this gene is a member of the serine/threonine protein kinase family. This kinase has been shown to specifically activate MAPK8/JNK. The activation of MAPK8 by this kinase is found to be inhibited by the dominant-negative mutants of MAP3K7/TAK1, MAP2K4/MKK4, and MAP2K7/MKK7, which suggests that this kinase may function through the MAP3K7-MAP2K4-MAP2K7 kinase cascade, and mediate the TNF-alpha signaling pathway. Alternatively spliced transcript variants encoding different isoforms have been identified.</p> <p>Alias Symbols: FLH21957, FLJ10410, FLJ20373, FLJ90111, HGK, KIAA0687, NIK, MEKKK4</p> <p>Protein Interaction Partner: UBC, MOB1B, NME7, PPP1CC, HSP90AA1, PAXIP1, GRK5, TRAPPC9, PPP1CA, KIF26B, HIST2H2BE, SLC9A1, PRKCE, KIF5A, ZRANB1, DOK1, MAP3K7, NCK1, GBP3, RAP2A, RASA1, ITGB1, MAP3K1, BRCA1, ATL1,</p> <p>Protein Size: 1239</p>
Molecular Weight:	142 kDa
Gene ID:	9448
NCBI Accession:	<a href="#">NM_004834</a> , <a href="#">NP_004825</a>
UniProt:	<a href="#">O95819</a>

## Application Details

Application Notes:	Optimal working dilutions should be determined experimentally by the investigator.
Comment:	Antigen size: 1166 AA
Restrictions:	For Research Use only

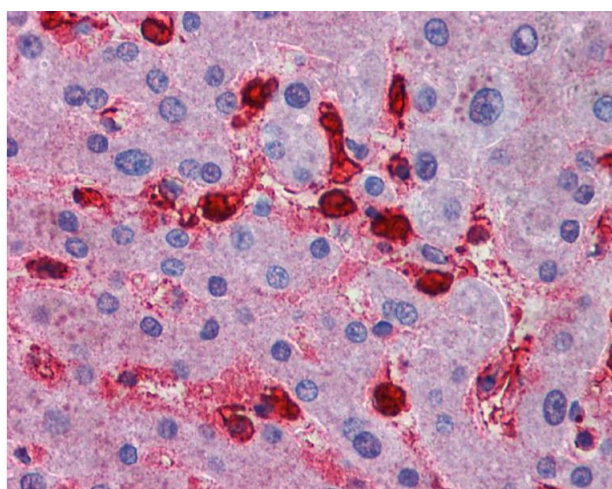
## Handling

Format:	Liquid
Concentration:	Lot specific
Buffer:	Liquid. Purified antibody supplied in 1x PBS buffer with 0.09 % (w/v) sodium azide and 2 % sucrose.
Preservative:	Sodium azide

## Handling

Precaution of Use:	This product contains Sodium azide: a POISONOUS AND HAZARDOUS SUBSTANCE which should be handled by trained staff only.
Handling Advice:	Avoid repeated freeze-thaw cycles.
Storage:	-20 °C
Storage Comment:	For short term use, store at 2-8°C up to 1 week. For long term storage, store at -20°C in small aliquots to prevent freeze-thaw cycles.

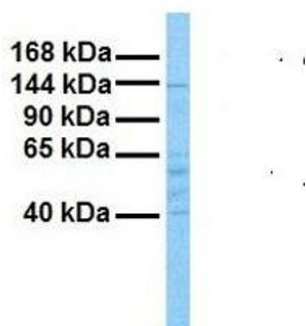
## Images



### Immunohistochemistry

**Image 1.**

## MAP4K4



### Western Blotting

**Image 2.** Host: Rabbit Target Name: MAP4K4 Sample Tissue: Human Stomach Tumor Antibody Dilution: 1.0ug/ml



Western Blotting

**Image 3.** WB Suggested Anti-MAP4K4 Antibody Titration:  
0.2-1 ug/ml ELISA Titer: 1:1562500 Positive Control: Human  
Small Intestine