

Datasheet for ABIN2783644
anti-PAPD4 antibody (C-Term)



[Go to Product page](#)

1 Image

Overview

Quantity:	100 µL
Target:	PAPD4
Binding Specificity:	C-Term
Reactivity:	Human, Mouse, Rat, Cow, Dog, Guinea Pig, Horse, Rabbit, Zebrafish (Danio rerio)
Host:	Rabbit
Clonality:	Polyclonal
Conjugate:	This PAPD4 antibody is un-conjugated
Application:	Western Blotting (WB)

Product Details

Immunogen:	The immunogen is a synthetic peptide corresponding to a region of Rat
Sequence:	YICVEEPFDG TNTARAVHEK QKFDMIKDQF LKSWQRLKNK RDLNSVLPLR
Predicted Reactivity:	Cow: 100%, Dog: 100%, Guinea Pig: 100%, Horse: 100%, Human: 100%, Mouse: 100%, Rabbit: 100%, Rat: 100%, Zebrafish: 83%
Characteristics:	This is a rabbit polyclonal antibody against Papd4 . It was validated on Western Blot.
Purification:	Affinity Purified

Target Details

Target:	PAPD4
Alternative Name:	Papd4 (PAPD4 Products)

Target Details

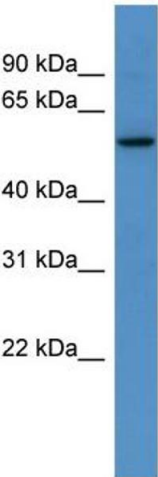
Background:	<p>Papd4 is a cytoplasmic poly(A) RNA polymerase that adds successive AMP monomers to the 3'-end of specific RNAs, forming a poly(A) tail. In contrast to the canonical nuclear poly(A) RNA polymerase, it only adds poly(A) to selected cytoplasmic mRNAs. Papd4 does not play a role in replication-dependent histone mRNA degradation.</p> <p>Alias Symbols: MGC93684, Papd4</p> <p>Protein Size: 484</p>
Molecular Weight:	56 kDa
Gene ID:	361878
NCBI Accession:	NM_001008372 , NP_001008373
UniProt:	Q5U315

Application Details

Application Notes:	Optimal working dilutions should be determined experimentally by the investigator.
Comment:	Antigen size: 484 AA
Restrictions:	For Research Use only

Handling

Format:	Liquid
Concentration:	Lot specific
Buffer:	Liquid. Purified antibody supplied in 1x PBS buffer with 0.09 % (w/v) sodium azide and 2 % sucrose.
Preservative:	Sodium azide
Precaution of Use:	This product contains Sodium azide: a POISONOUS AND HAZARDOUS SUBSTANCE which should be handled by trained staff only.
Handling Advice:	Avoid repeated freeze-thaw cycles.
Storage:	-20 °C
Storage Comment:	For short term use, store at 2-8°C up to 1 week. For long term storage, store at -20°C in small aliquots to prevent freeze-thaw cycles.



Western Blotting

Image 1. WB Suggested Anti-Papd4 Antibody Titration: 0.2-1 ug/ml ELISA Titer: 1:12500 Positive Control: Rat Kidney