

Datasheet for ABIN2783656

anti-SULT1A1 antibody (N-Term)



[Go to Product page](#)

4 Images

1 Publication

Overview

Quantity:	100 µL
Target:	SULT1A1
Binding Specificity:	N-Term
Reactivity:	Human, Mouse, Rat, Horse, Pig, Rabbit, Cow, Zebrafish (Danio rerio), Dog, Guinea Pig
Host:	Rabbit
Clonality:	Polyclonal
Conjugate:	This SULT1A1 antibody is un-conjugated
Application:	Western Blotting (WB), Immunohistochemistry (IHC)

Product Details

Immunogen:	The immunogen is a synthetic peptide directed towards the N terminal region of human SULT1A1
Sequence:	ELIQDTSRPP LEYVKGVPLI KYFAEALGPL QSFQARPDDL LISTYPKSGT
Predicted Reactivity:	Cow: 100%, Dog: 93%, Guinea Pig: 86%, Horse: 100%, Human: 100%, Mouse: 86%, Pig: 93%, Rabbit: 100%, Rat: 93%, Zebrafish: 86%
Characteristics:	This is a rabbit polyclonal antibody against SULT1A1. It was validated on Western Blot using a cell lysate as a positive control.
Purification:	Affinity Purified

Target Details

Target:	SULT1A1
---------	---------

Target Details

Alternative Name: SULT1A1 ([SULT1A1 Products](#))

Background: Sulfotransferase enzymes catalyze the sulfate conjugation of many hormones, neurotransmitters, drugs, and xenobiotic compounds. These cytosolic enzymes are different in their tissue distributions and substrate specificities. The gene structure (number and length of exons) is similar among family members. SULT1A1 is one of two phenol sulfotransferases with thermostable enzyme activity. Sulfotransferase enzymes catalyze the sulfate conjugation of many hormones, neurotransmitters, drugs, and xenobiotic compounds. These cytosolic enzymes are different in their tissue distributions and substrate specificities. The gene structure (number and length of exons) is similar among family members. This gene encodes one of two phenol sulfotransferases with thermostable enzyme activity. Multiple alternatively spliced variants that encode two isoforms have been identified for this gene.

Alias Symbols: HAST1/HAST2, MGC131921, MGC5163, P-PST, PST, ST1A3, STP, STP1, TSPST1, ST1A1

Protein Interaction Partner: SULT2B1, TOM1L2, SRXN1, ZFYVE19, TUBB6, THADA, UBXN1, SMARCAL1, TMOD3, UBXN7, STMN2, AHCYL1, PTGES3, SSSCA1, YAP1, UBE4B, STUB1, UBA2, USP34, ZRANB2, ZPR1, STAM, UCHL3, SUMO1, UBE2B, UBE2A, TTC1, TRIP6, TPM4, TPM2, TPM1, SNCG, RCN1, PPM1G, ATP6V1B2, UBC,

Protein Size: 295

Molecular Weight: 34 kDa

Gene ID: 6817

NCBI Accession: [NM_001055](#), [NP_001046](#)

UniProt: [P50226](#)

Application Details

Application Notes: Optimal working dilutions should be determined experimentally by the investigator.

Comment: Antigen size: 295 AA

Restrictions: For Research Use only

Handling

Format: Liquid

Concentration: Lot specific

Buffer: Liquid. Purified antibody supplied in 1x PBS buffer with 0.09 % (w/v) sodium azide and 2 %

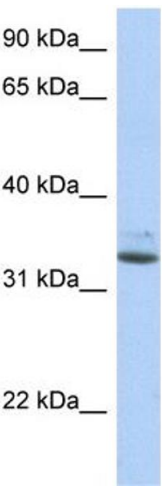
Handling

	sucrose.
Preservative:	Sodium azide
Precaution of Use:	This product contains Sodium azide: a POISONOUS AND HAZARDOUS SUBSTANCE which should be handled by trained staff only.
Handling Advice:	Avoid repeated freeze-thaw cycles.
Storage:	-20 °C
Storage Comment:	For short term use, store at 2-8°C up to 1 week. For long term storage, store at -20°C in small aliquots to prevent freeze-thaw cycles.

Publications

Product cited in:	Clayton, Daley, MacDonald, Fernandez-Vizarra, Bottegoni, ONeil, Major, Griffin, Zhuang, Adewoye, Woolcock, Jones, Goodyear, Elmesmari, Filer, Tennant, Alivernini, Buckley, Pitceathly et al.: "Inflammation causes remodeling of mitochondrial cytochrome c oxidase mediated by the bifunctional gene C15orf48. ..." in: Science advances , Vol. 7, Issue 50, pp. eab15182, (2021) (PubMed).
-------------------	--

Images

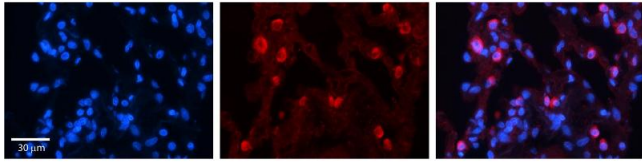


Western Blotting

Image 1. WB Suggested Anti-SULT1A1 Antibody Titration:
0.2-1 ug/ml Positive Control: Human Liver

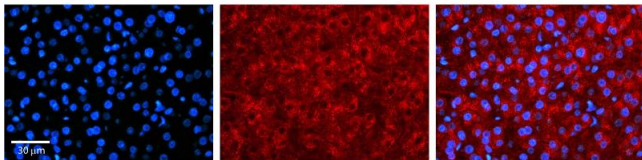
Immunohistochemistry

Image 2.



Immunohistochemistry

Image 3.



Please check the [product details page](#) for more images. Overall 4 images are available for ABIN2783656.