

Datasheet for ABIN2783657  
**anti-GGT7 antibody (C-Term)**[Go to Product page](#)

## 1 Image

## Overview

Quantity:	100 µL
Target:	GGT7
Binding Specificity:	C-Term
Reactivity:	Human, Mouse, Rat, Rabbit, Dog, Horse, Pig, Cow, Guinea Pig
Host:	Rabbit
Clonality:	Polyclonal
Conjugate:	This GGT7 antibody is un-conjugated
Application:	Western Blotting (WB)

## Product Details

Immunogen:	The immunogen is a synthetic peptide directed towards the C terminal region of human GGTL3
Sequence:	ILLNSQMLDF SWPNRTANHS APSLENSVQP GKRPLSFLLP TVVRPAEGLC
Predicted Reactivity:	Cow: 93%, Dog: 100%, Guinea Pig: 86%, Horse: 100%, Human: 100%, Mouse: 100%, Pig: 93%, Rabbit: 100%, Rat: 100%
Characteristics:	This is a rabbit polyclonal antibody against GGTL3. It was validated on Western Blot using a cell lysate as a positive control.
Purification:	Affinity Purified

## Target Details

Target:	GGT7
---------	------

## Target Details

Alternative Name:	GGTL3 ( <a href="#">GGT7 Products</a> )
Background:	<p>GGTL3 is an enzymes involved in both the metabolism of glutathione and in the transpeptidation of amino acids. Changes in the activity of gamma-glutamyltransferase may signal preneoplastic or toxic conditions in the liver or kidney. GGTL3 consists of a heavy and a light chain, and it can interact with CT120, a plasma membrane-associated protein that is possibly involved in lung carcinogenesis. This gene is a member of a gene family that encodes enzymes involved in both the metabolism of glutathione and in the transpeptidation of amino acids. Changes in the activity of gamma-glutamyltransferase may signal preneoplastic or toxic conditions in the liver or kidney. The protein encoded by this gene consists of a heavy and a light chain, and it can interact with CT120, a plasma membrane-associated protein that is possibly involved in lung carcinogenesis. Sequence Note: This RefSeq record was created from transcript and genomic sequence data to make the sequence consistent with the reference genome assembly. The genomic coordinates used for the transcript record were based on transcript alignments.</p> <p>Alias Symbols: D20S101, GGTL5, dJ18C9.2, GGT4, GGTL3</p> <p>Protein Interaction Partner: TMEM242, LHFPL5, MALL, GPR25, FAM96B, DCP2, GGT7, FAM57A, Protein Size: 662</p>
Molecular Weight:	70 kDa
Gene ID:	2686
NCBI Accession:	<a href="#">NM_178026</a> , <a href="#">NP_821158</a>
UniProt:	<a href="#">B5MD39</a>

## Application Details

Application Notes:	Optimal working dilutions should be determined experimentally by the investigator.
Comment:	Antigen size: 662 AA
Restrictions:	For Research Use only

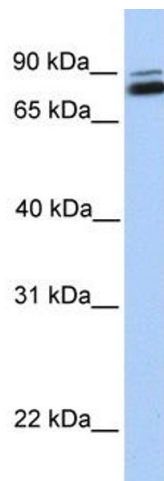
## Handling

Format:	Liquid
Concentration:	Lot specific
Buffer:	Liquid. Purified antibody supplied in 1x PBS buffer with 0.09 % (w/v) sodium azide and 2 % sucrose.

## Handling

Preservative:	Sodium azide
Precaution of Use:	This product contains Sodium azide: a POISONOUS AND HAZARDOUS SUBSTANCE which should be handled by trained staff only.
Handling Advice:	Avoid repeated freeze-thaw cycles.
Storage:	-20 °C
Storage Comment:	For short term use, store at 2-8°C up to 1 week. For long term storage, store at -20°C in small aliquots to prevent freeze-thaw cycles.

## Images



**Western Blotting**

**Image 1.** WB Suggested Anti-GGTL3 Antibody Titration: 0.2-1 ug/ml Positive Control: Human brain