

Datasheet for ABIN2783661
anti-NAT8L antibody (C-Term)[Go to Product page](#)

1 Image

Overview

Quantity:	100 µL
Target:	NAT8L
Binding Specificity:	C-Term
Reactivity:	Human, Mouse, Rat, Horse, Dog, Guinea Pig, Rabbit, Cow, Zebrafish (Danio rerio)
Host:	Rabbit
Clonality:	Polyclonal
Conjugate:	This NAT8L antibody is un-conjugated
Application:	Western Blotting (WB)

Product Details

Sequence:	VAAHKLYESL GFRHMGASDH YVLPGMTLSL AERLFFQVRY HRYRLQLREE
Predicted Reactivity:	Cow: 100%, Dog: 100%, Guinea Pig: 100%, Horse: 100%, Human: 100%, Mouse: 100%, Rabbit: 100%, Rat: 100%, Zebrafish: 89%
Characteristics:	This is a rabbit polyclonal antibody against NAT8L. It was validated on Western Blot.
Purification:	Affinity Purified

Target Details

Target:	NAT8L
Alternative Name:	NAT8L (NAT8L Products)
Background:	This gene encodes a single-pass membrane protein, which contains a conserved sequence of

Target Details

the GCN5 or NAT superfamily of N-acetyltransferases and is a member of the N-acetyltransferase (NAT) superfamily. This protein is a neuron-specific protein and is the N-acetylaspertate (NAA) biosynthetic enzyme, catalyzing the NAA synthesis from L-aspartate and acetyl-CoA. NAA is a major storage and transport form of acetyl coenzyme A specific to the nervous system. The gene mutation results in primary NAA deficiency (hypoacetylaspartia).

Alias Symbols: CML3, FLJ37478, MGC117272, NAT8-LIKE, NACED

Protein Size: 134

Molecular Weight: 15 kDa

Gene ID: 339983

NCBI Accession: [NM_178557](#), [NP_848652](#)

UniProt: [Q8N9F0](#)

Application Details

Application Notes: Optimal working dilutions should be determined experimentally by the investigator.

Comment: Antigen size: 134 AA

Restrictions: For Research Use only

Handling

Format: Liquid

Concentration: Lot specific

Buffer: Liquid. Purified antibody supplied in 1x PBS buffer with 0.09 % (w/v) sodium azide and 2 % sucrose.

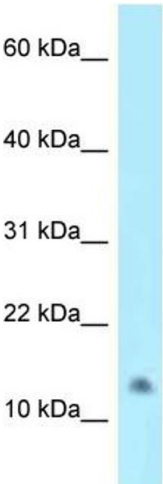
Preservative: Sodium azide

Precaution of Use: This product contains Sodium azide: a POISONOUS AND HAZARDOUS SUBSTANCE which should be handled by trained staff only.

Handling Advice: Avoid repeated freeze-thaw cycles.

Storage: -20 °C

Storage Comment: For short term use, store at 2-8°C up to 1 week. For long term storage, store at -20°C in small aliquots to prevent freeze-thaw cycles.



Rabbit Anti-NAT8L Antibody
Catalog Number: ARP49151
Lot Number: QC20743
Lane: HepG2 Cell Lysate

Antibody Titration: 1.0µg/ml
Gel Concentration: 10-20%

Western Blotting

Image 1. WB Suggested Anti-NAT8L Antibody Titration: 1.0 ug/ml Positive Control: HepG2 Whole Cell