

Datasheet for ABIN2783679
anti-MAP3K2 antibody (N-Term)[Go to Product page](#)

2 Images

Overview

Quantity:	100 µL
Target:	MAP3K2
Binding Specificity:	N-Term
Reactivity:	Human, Mouse, Rat, Dog, Rabbit, Cow, Horse, Guinea Pig, Pig, Zebrafish (Danio rerio)
Host:	Rabbit
Clonality:	Polyclonal
Conjugate:	This MAP3K2 antibody is un-conjugated
Application:	Western Blotting (WB)

Product Details

Immunogen:	The immunogen is a synthetic peptide directed towards the N terminal region of human MAP3K2
Sequence:	AERKKRLSII GPTSRDRSSP PPGYIPDELH QVARNGSFTS INSEGEFIPE
Predicted Reactivity:	Cow: 100%, Dog: 100%, Guinea Pig: 92%, Horse: 80%, Human: 100%, Mouse: 86%, Pig: 100%, Rabbit: 93%, Rat: 93%, Zebrafish: 100%
Characteristics:	This is a rabbit polyclonal antibody against MAP3K2. It was validated on Western Blot using a cell lysate as a positive control.
Purification:	Affinity Purified

Target Details

Target:	MAP3K2
---------	--------

Target Details

Alternative Name: MAP3K2 ([MAP3K2 Products](#))

Background: MAP3K2 is a component of a protein kinase signal transduction cascade. It regulates the JNK and ERK5 pathways by phosphorylating and activating MAP2K5 and MAP2K7. It also plays a role in caveolae kiss-and-run dynamics. The protein encoded by this gene is a member of serine/threonine protein kinase family. This kinase preferentially activates other kinases involved in the MAP kinase signaling pathway. This kinase has been shown to directly phosphorylate and activate I κ B kinases, and thus plays a role in NF-kappa B signaling pathway. This kinase has also been found to bind and activate protein kinase C-related kinase 2, which suggests its involvement in a regulated signaling process. Publication Note: This RefSeq record includes a subset of the publications that are available for this gene. Please see the Entrez Gene record to access additional publications. PRIMARYREFSEQ_SPAN
PRIMARY_IDENTIFIER PRIMARY_SPAN COMP 1-18 AF111105.1 37-54 19-79 AI760702.1 474-534 80-371 AF111105.1 116-407 372-2650 AB208963.1 313-2591 2651-3557 AK075004.1 2050-2956 3558-3571 BQ423724.1 71-84 3572-3577 W07290.1 11-16 3578-4302 AK074577.1 1-725 4303-4421 BM470563.1 21-139 4422-4424 AK074577.1 845-847 4425-4941 BM470563.1 142-658
Alias Symbols: MEKK2, MEKK2B
Protein Interaction Partner: MAP3K2, STAMBP, USP2, UBC, MAP2K7, MAP2K5, MAPK7, MAP3K3, XIAP, BIRC2, YWHAB, YWHAЕ, HSP90AA1, STK38, MAP2K4, MAP2K3, SMURF1, NEDD4, NEDD4L, Stub1, YWHAG, PIBF1, IKBKG, WNK1, SH2D2A, PKN2, MAP3K5, YWHAZ, MAPK8, NFKBIA, SFN,
Protein Size: 619

Molecular Weight: 70 kDa

Gene ID: 10746

NCBI Accession: [NM_006609](#), [NP_006600](#)

UniProt: [Q9Y2U5](#)

Pathways: [MAPK Signaling](#)

Application Details

Application Notes: Optimal working dilutions should be determined experimentally by the investigator.

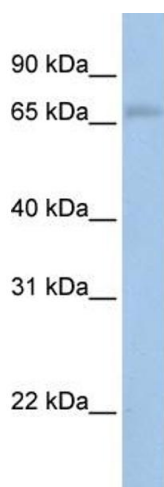
Comment: Antigen size: 619 AA

Restrictions: For Research Use only

Handling

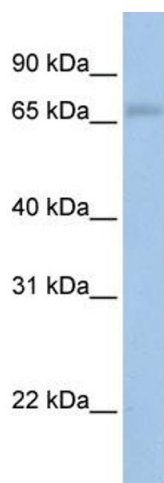
Format:	Liquid
Concentration:	Lot specific
Buffer:	Liquid. Purified antibody supplied in 1x PBS buffer with 0.09 % (w/v) sodium azide and 2 % sucrose.
Preservative:	Sodium azide
Precaution of Use:	This product contains Sodium azide: a POISONOUS AND HAZARDOUS SUBSTANCE which should be handled by trained staff only.
Handling Advice:	Avoid repeated freeze-thaw cycles.
Storage:	-20 °C
Storage Comment:	For short term use, store at 2-8°C up to 1 week. For long term storage, store at -20°C in small aliquots to prevent freeze-thaw cycles.

Images



Western Blotting

Image 1. WB Suggested Anti-MAP3K2 Antibody Titration: 0.2-1 ug/ml Positive Control: MCF7 cell lysate MAP3K2 is supported by BioGPS gene expression data to be expressed in MCF7



Western Blotting

Image 2. WB Suggested Anti-MAP3K2 Antibody Titration: 0.2-1 µg/mL Positive Control: MCF7 cell lysate MAP3K2 is supported by BioGPS gene expression data to be expressed in MCF7