



Datasheet for ABIN2783681
anti-gGT2 antibody (N-Term)



[Go to Product page](#)

2 Images

Overview

Quantity:	100 µL
Target:	gGT2
Binding Specificity:	N-Term
Reactivity:	Human, Pig, Cow, Dog, Guinea Pig, Horse, Rabbit, Rat, Zebrafish (Danio rerio)
Host:	Rabbit
Clonality:	Polyclonal
Conjugate:	This gGT2 antibody is un-conjugated
Application:	Western Blotting (WB)

Product Details

Immunogen:	The immunogen is a synthetic peptide directed towards the N terminal region of human GGT2
Sequence:	LEIGRDTLRD GGSADVAAIA ALLCVGLMNA HSMGIGVGLF LTIYNSTTGK
Predicted Reactivity:	Cow: 86%, Dog: 86%, Guinea Pig: 86%, Horse: 79%, Human: 100%, Pig: 100%, Rabbit: 93%, Rat: 86%, Zebrafish: 86%
Characteristics:	This is a rabbit polyclonal antibody against GGT2. It was validated on Western Blot.
Purification:	Affinity Purified

Target Details

Target:	gGT2
Alternative Name:	GGT2 (gGT2 Products)

Target Details

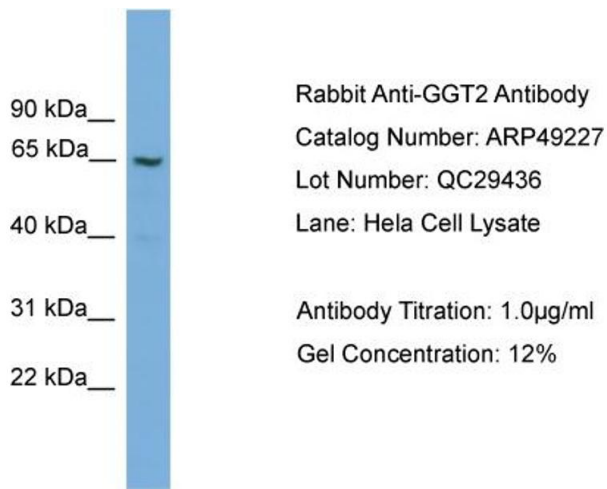
Background:	<p>GGT2 belongs to the gamma-glutamyltransferase (GGT, EC 2.3.2.2) gene family. GGT is a membrane-bound extracellular enzyme that cleaves gamma-glutamyl peptide bonds in glutathione and other peptides and transfers the gamma-glutamyl moiety to acceptors. GGT is also key to glutathione homeostasis because it provides substrates for glutathione synthesis (Heisterkamp et al., 2008 [PubMed 18357469]).</p> <p>Alias Symbols: GGT, GGT 2</p> <p>Protein Size: 569</p>
Molecular Weight:	62 kDa
Gene ID:	728441
NCBI Accession:	XM_001129425 , XP_001129425

Application Details

Application Notes:	Optimal working dilutions should be determined experimentally by the investigator.
Comment:	Antigen size: 569 AA
Restrictions:	For Research Use only

Handling

Format:	Liquid
Concentration:	Lot specific
Buffer:	Liquid. Purified antibody supplied in 1x PBS buffer with 0.09 % (w/v) sodium azide and 2 % sucrose.
Preservative:	Sodium azide
Precaution of Use:	This product contains Sodium azide: a POISONOUS AND HAZARDOUS SUBSTANCE which should be handled by trained staff only.
Handling Advice:	Avoid repeated freeze-thaw cycles.
Storage:	-20 °C
Storage Comment:	For short term use, store at 2-8°C up to 1 week. For long term storage, store at -20°C in small aliquots to prevent freeze-thaw cycles.

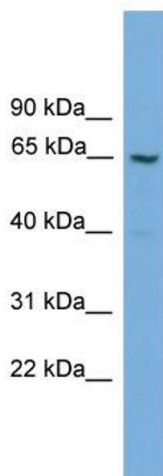


Western Blotting

Image 1. WB Suggested Anti-GGT2

Antibody Titration: 0.2-1 µg/mL

Positive Control: HeLa cell lysate



Western Blotting

Image 2. WB Suggested Anti-GGT2 Antibody Titration: 0.2-1

ug/ml Positive Control: HeLa cell lysate